

# Epidemiological influenza surveillance systems in Jamaica: components and results 2014–2015

S Jackson<sup>1</sup>, K Webster<sup>2</sup>, I Wellington<sup>2</sup>, M Bullock–DuCasse<sup>2,3</sup>

1 NIC (University of the West Indies)

2 Ministry of Health

3 IHR Focal Point–Jamaica

# Reporting Requirements

## Immediate

- **Outbreaks of respiratory illnesses in institutions** such as schools, summer schools or camps, hospitals, workplaces, nursing homes, correctional facilities, children homes, daycare facilities, etc)
  - *Parish Health Departments should closely monitor clusters of cases within these settings (cluster: 3 or more Acute Respiratory Illnesses (ARI) cases occurring with onset of illness within a period of 7 days)*
- **A sustained increase (increases for at least 2 consecutive weeks) in fever and respiratory (ARI) cases seen at the routine Sentinel Sites or any other health care facility**

## Weekly

- Routine sentinel sites:
  - Fever and Respiratory symptoms (ARI)
  - All Hospitals
  - Admitted Lower Respiratory Tract Infections (LRTI)/Respiratory-related deaths
  - Severe Acute Respiratory Illnesses (SARI)/SARI deaths from all public hospitals
  - Number of hospital admissions

## Port Health

- Port Health Officers will report travelers/persons with respiratory illnesses requiring medical assistance (e.g. SOB, difficulty breathing) to the Medical Officer (Health) as they would normally report unusual health events.

## Notifiable Disease

- Influenza is designated a Class 2 Notifiable Disease which means suspected cases should be reported weekly using a line listing format
- **HOWEVER...XXXXX**
- **Influenza A pH1N1(2009) and any new subtype influenza are Class 1 Notifiable Diseases and should be reported to the Parish HD or NSU within 24 hrs using a Class 1 Notification form**

## 79 ARI SENTINEL SITES

### Sentinel Reporting Form

- Weekly No. ARI cases
- Weekly No. total patients seen

## 6 ARI/SARI SENTINEL SITES

### ARI/SARI Weekly Data Collection Form

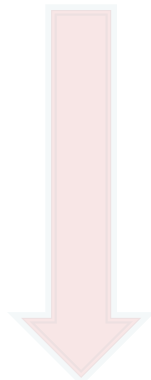
- Weekly No. SARI cases
- Weekly SARI samples taken
- Weekly No. SARI hospitalized cases
- Weekly No. ARI cases
- Weekly ARI samples taken
- Weekly No. Total patients seen /admitted to hospital
- Weekly No. deaths
- ISARI investigation reports

National Public Health Lab

National Influenza Centre

Electronic Report  
Weekly Laboratory reports

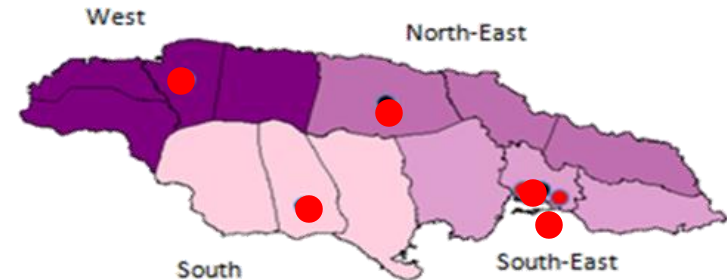
4 REGIONAL HEALTH AUTHORITIES



13 PARISH HEALTH DEPARTMENTS

Weekly Parish Surveillance Report

MINISTRY OF HEALTH - Surveillance Unit



PAHO

INTERNAL

CARPHA

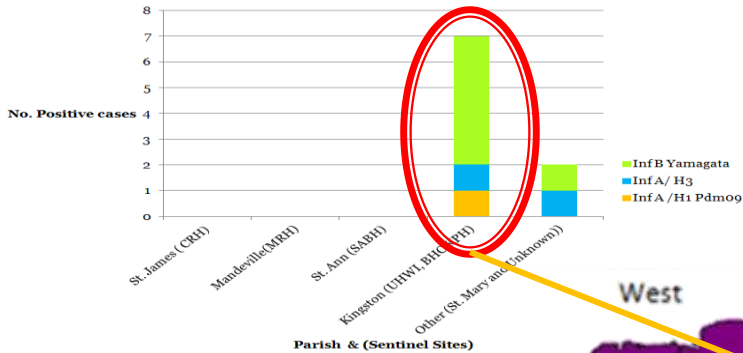
Country Weekly Surveillance Bulletin

Country Weekly Surveillance Bulletin

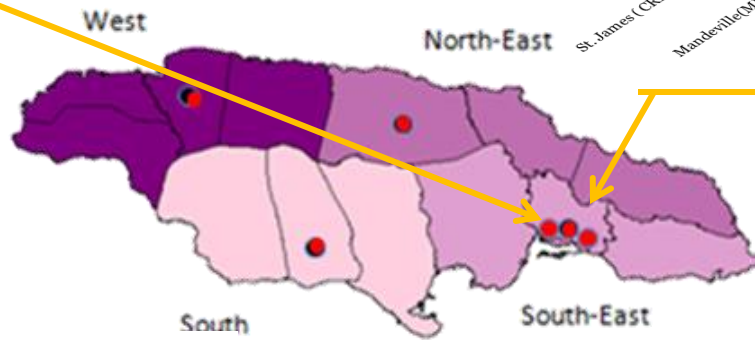
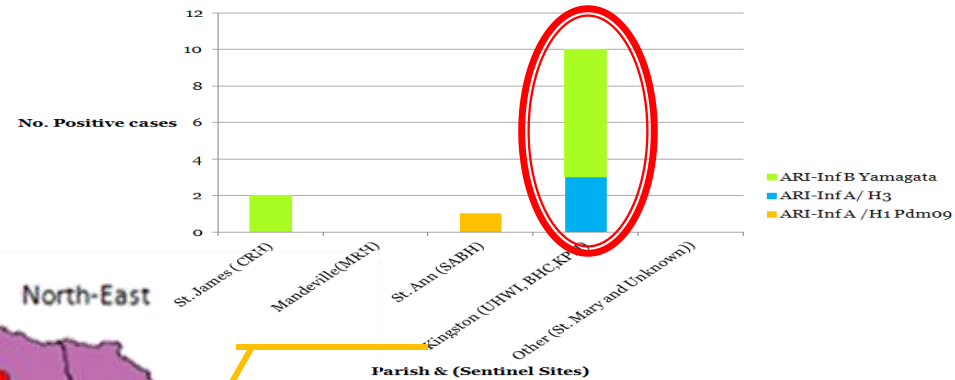
ARI/SARI Weekly Data Collection Forms

# Project: Enhancing SARI surveillance

Positive Influenza SARI cases by Sentinel Sites & Parish Jamaica 2014



Positive Influenza ARI cases by Sentinel Sites & Parish Jamaica 2014



Jamaica  
Geographic Laboratory ARI and SARI Sentinel Surveillance  
EW 1 to 53, 2014

Location	No. Specimens submitted*	%
Kingston	260	72.22
St. Ann	32	8.89
Not stated	29	8.06
St. James	23	6.39
Mandeville	12	3.33
St. Mary	2	0.56
Westmoreland	2	0.56
St. Thomas	0	0.00
<b>TOTAL</b>	<b>360</b>	<b>100.00</b>

\* = Specimens submitted from ARI and SARI Sentinel Sites inclusive of sera and respiratory samples

Jamaica  
Geographic Laboratory ARI and SARI Sentinel Surveillance and enhanced UHWI SARI Surveillance  
EW 1 to 53, 2014

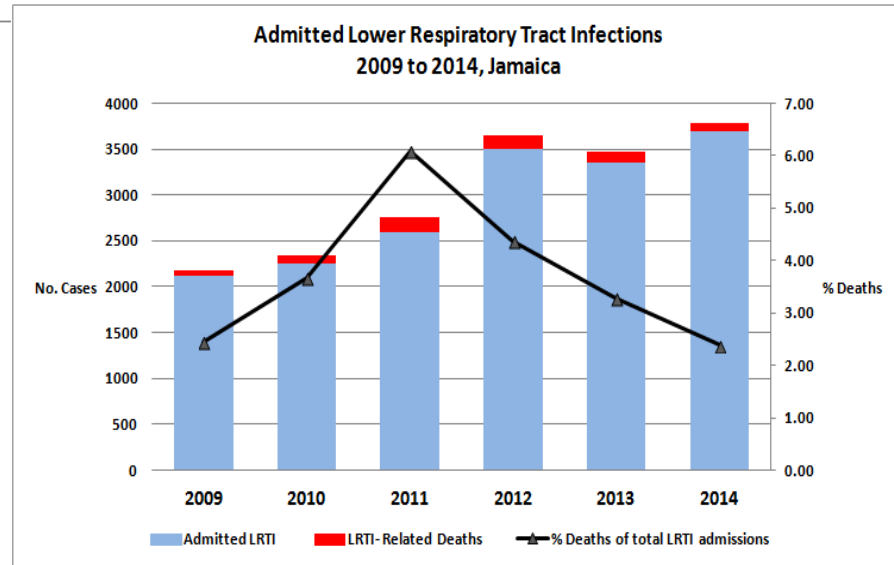
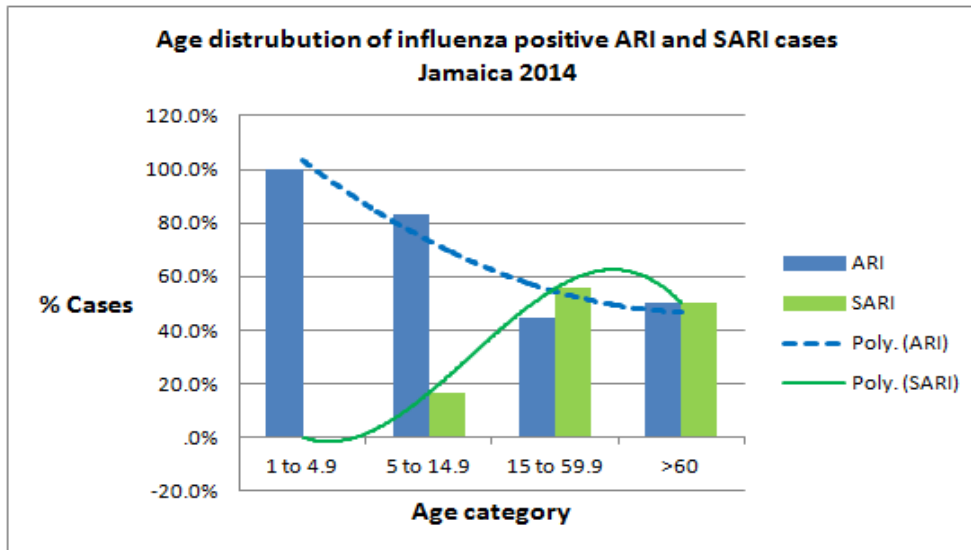
Location	No. Specimens submitted*	%
Kingston & enhanced UHWI surveillance **	618	86.07
St. Ann	32	4.46
Not stated	29	4.04
St. James	23	3.20
Mandeville	12	1.67
St. Mary	2	0.28
Westmoreland	2	0.28
St. Thomas	0	0.00
<b>TOTAL</b>	<b>718</b>	<b>100.00</b>

\* = Specimens submitted from ARI and SARI Sentinel Sites inclusive of sera and respiratory samples

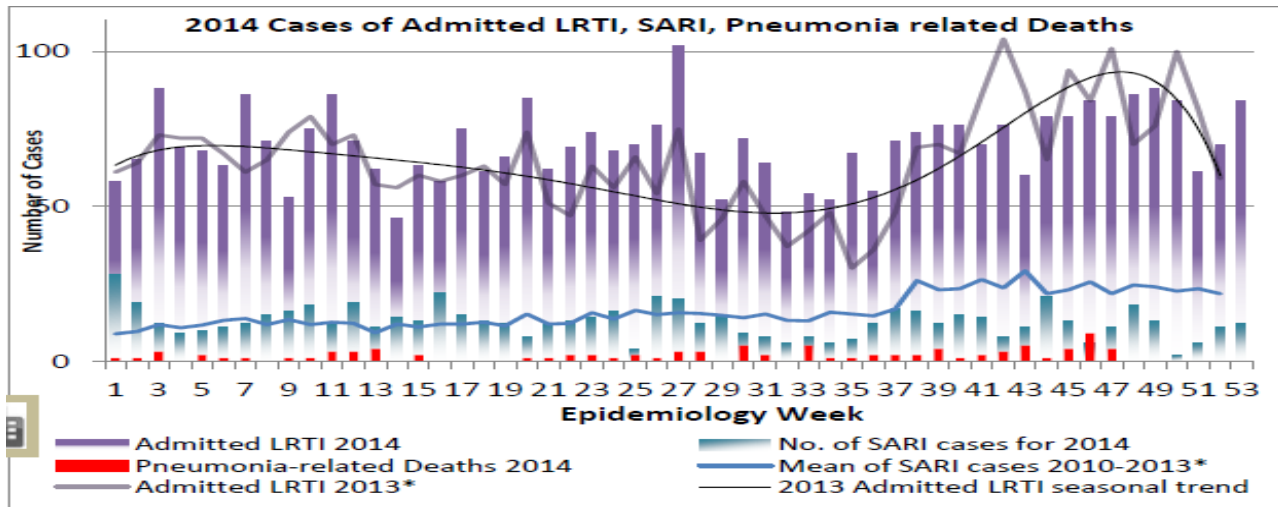
\*\*UHWI = University Hospital of the West Indies – NIC Project



# Jamaica SARI surveillance analysis – 2014

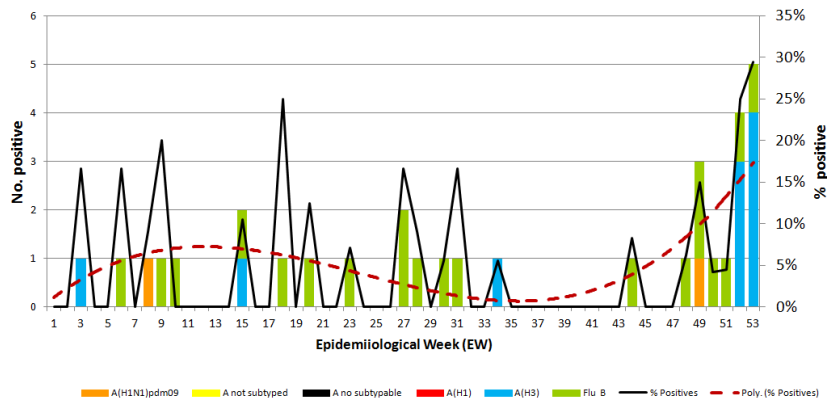


# Jamaica SARI surveillance analysis – 2014

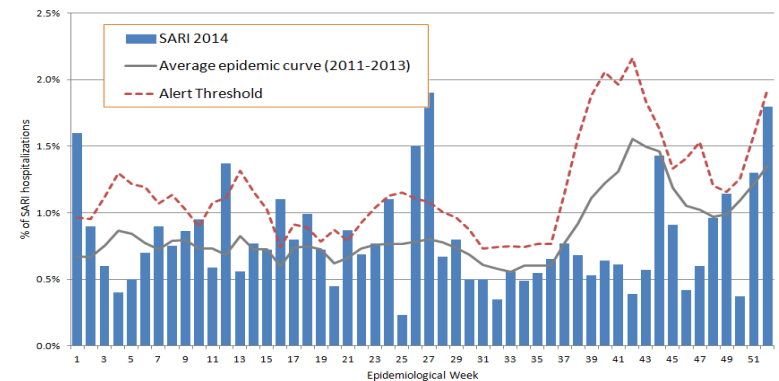


**\*Additional data needed to calculate Epidemic Thresholds**

**Distribution of Influenza viruses among ARI and SARI cases  
Jamaica- 2014 , EW 1-53**

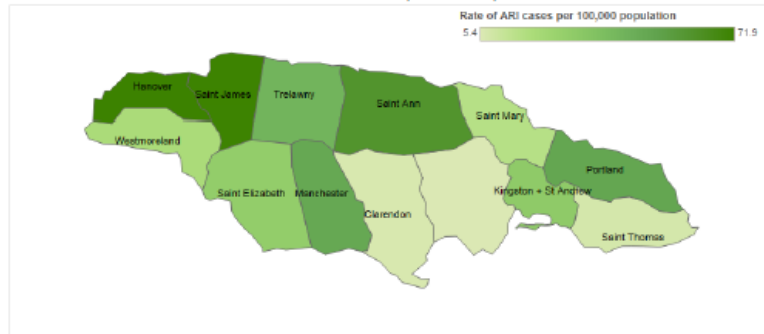


**Jamaica: Percentage of Hospital Admissions for Severe Acute  
Respiratory Illness (SARI) 2014  
(compared with 2011-2013)**

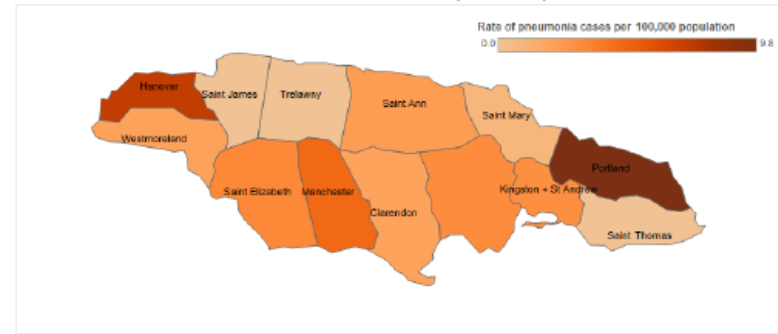


# Epidemiological influenza surveillance systems in Jamaica: components and results, 2014–2015

Jamaica: ARI activity by parish, EW 14, 2015  
Actividad de IRA, SE 14, 2015



Jamaica: Pneumonia activity by parish, EW 14, 2015  
Actividad de Neumonía, SE 14, 2015



## Summary

1. **Weekly epidemiological reporting to nationally and internationally partners is adequate**
2. **Epidemiological surveillance is now a part of PAHO FluID reporting**
3. **Average Epidemic and Alert Threshold levels for ARI and SARI surveillance have been established**
4. **There is an increasing trend in the number of admitted LRTI's which as of 1/1/2015 is not accompanied by increased deaths**
5. **ARI cases were more prevalent persons <15yrs and SARI cases in persons >60yrs**
6. **The seasonality of influenza in Jamaica is bimodal**

## Recommendations

1. **Collection and integration of data to enable age categorization in FluID reporting is necessary**
1. **Identify challenges in the submission of samples from SARI cases**
2. **Strategies should focus on phased improvement systems for pre-selected SARI sentinel sites to improve sample collection and submission**
3. **Improve electronic communication and transport between parishes and NPHL and the NIC**