

WHO Global RSV Surveillance based on GISRS

- Surveillance outputs

<http://www.who.int/influenza/rsv/en/>



World Health
Organization

Publishing RSV surveillance output

DATA REPOSITORY
Submissions welcome

FluMan

Desktop licence

Tableau maps are not WHO compliant

BI-WEEKLY

server

Public's free

Public serv

SHINY free

Linux

MAP?

RESR? SERVE?

BURDEN REVIEWS

EURO MEMO

NOT TO FORGET

Public serv

Desktop

Linux

internal server

Public's free

Public serv

Gi

quoting

Training

Web

server

World Indicators

World Indicators
A country to see details below
Please click on region for details

| Region | Subregion | Land area (km ²) | Population (mill.) | GDP per Capita (USD) |
|----------|-----------------|------------------------------|--------------------|----------------------|
| Oceania | Oceania | 100 | 35 | 100 |
| Europe | European Union | 75 | 75 | 100 |
| Asia | South Asia | 15 | 15 | 100 |
| Americas | South America | 25 | 25 | 100 |
| Americas | Central America | 15 | 15 | 100 |

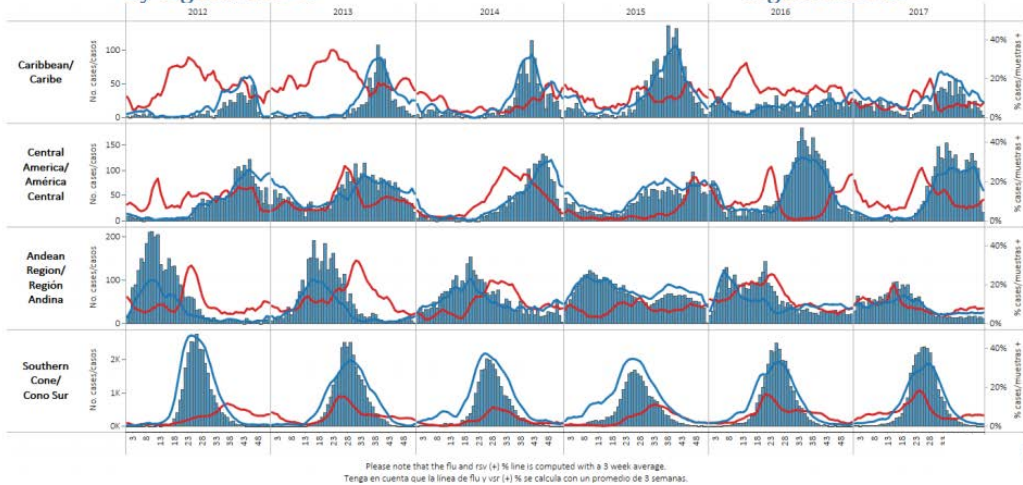
Tableau outputs



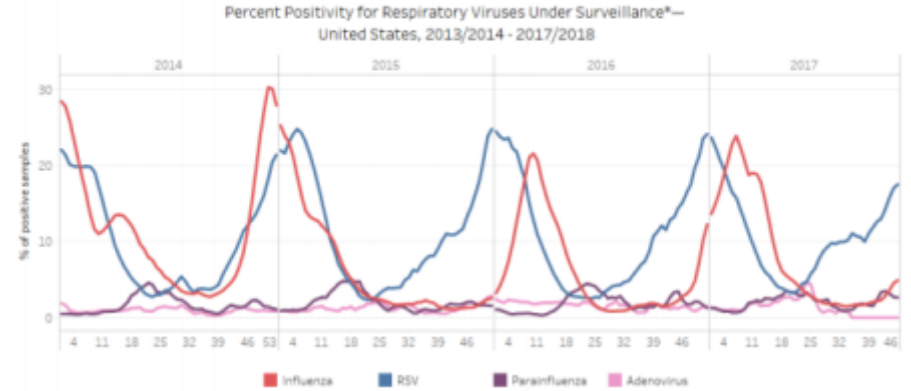
Examples from PAHO

Respiratory syncytial virus (RSV) circulation by region. 2012-17

Circulación de virus sincicial respiratorio por región. 2012-17



Graph 2. US: Percent positivity for respiratory virus EW 46
Porcentaje de positividad para virus respiratorios, por SE 46, 2013/14- 2017/18



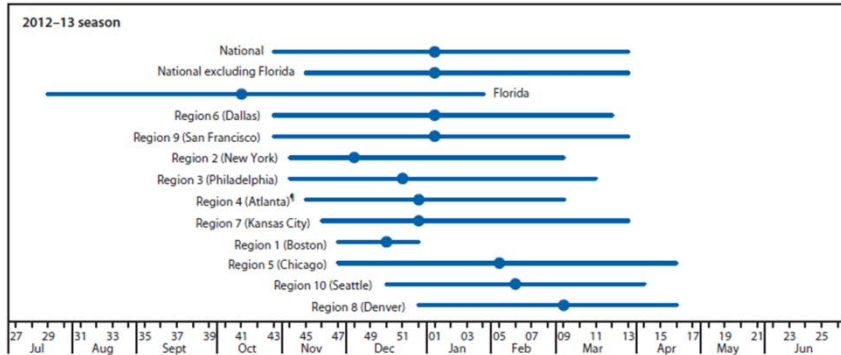
Weekly and cumulative numbers of influenza and other respiratory virus, by country and EW, 2017¹
Números semanales y acumulados de influenza y otros virus respiratorios, por país y SE, 2017²

| | | EW 47, 2017 / SE 47, 2017 | | | | | | | | | | | | | | |
|---|--------------------|---------------------------|--------------------|-------------------------|---------------------------|-------------------|-----------------|------------|---------------|-----------|---------------|-----------|-------------|-----------------|------------|----------------------------|
| | | N samples/muestras | Influenza A (H3N2) | Influenza A (H1N1)pdm09 | Influenza A No subtypable | Total Influenza B | Influenza (+) % | Adenovirus | Parainfluenza | RSV/VSR | % RSV/VSR (+) | Bocavirus | Coronavirus | Metapneumovirus | Rhinovirus | % All Positive Samples (+) |
| North America/ Amé... | USA | 15,268 | 168 | 18 | 795 | 280 | 8.3% | | | | | | | | | |
| Caribbean/ Caribe | Cuba | 21 | 0 | 0 | 0 | 0 | 0.0% | 0 | 0 | 1 | 4.8% | 0 | 0 | 0 | 9 | 57.1% |
| | Dominican Republic | 17 | 1 | | | 2 | 17.6% | | 1 | | | | | | | 23.5% |
| | Jamaica | 17 | 0 | 0 | 0 | 1 | 5.9% | | | | | | | | | 5.9% |
| | Suriname | 7 | | | | 0 | 0.0% | | | 3 | 42.9% | | | | | 42.9% |
| Central America/ América Central | Costa Rica | 51 | 10 | 0 | 0 | 0 | 19.6% | 6 | 0 | 4 | 7.8% | | | | | 39.2% |
| | El Salvador | 19 | 0 | 0 | 0 | 3 | 15.8% | 0 | 0 | 1 | 5.3% | | | | | 21.1% |
| | Guatemala | 10 | 0 | 0 | 0 | 0 | 0.0% | 3 | 0 | 0 | 0.0% | 0 | 0 | 0 | 0 | 30.0% |
| | Honduras | 6 | 0 | 0 | 0 | 0 | 0.0% | 0 | 0 | 0 | 0.0% | | | | | 0.0% |
| | Panama | 26 | 1 | 0 | 0 | 0 | 3.8% | 0 | 0 | 11 | 42.3% | | | 0 | 3 | 57.7% |
| Andean Region/ Región Andina | Colombia | 172 | 9 | 0 | 0 | 1 | 5.8% | 6 | 4 | 13 | 7.6% | 5 | 3 | 1 | 0 | 24.4% |
| | Ecuador | 10 | | | | 0 | 0.0% | | | 1 | | | | | | 10.0% |
| | Peru | 46 | 4 | 0 | 0 | 7 | 23.9% | 0 | 0 | 0 | 0.0% | 0 | 0 | 1 | 0 | 26.1% |
| | Venezuela | 1 | 0 | 0 | 0 | 0 | 0.0% | 0 | 0 | 0 | 0.0% | 0 | 0 | 0 | 0 | 0.0% |
| Brazil & Southern Cone/ Brasil y Cono Sur | Chile | 547 | 5 | | 4 | 23 | 5.9% | 16 | 36 | 10 | 1.8% | | | | 8 | 18.6% |
| | Chile_IRAG | 19 | 0 | 0 | 0 | 3 | 15.8% | 0 | 0 | 1 | 5.3% | | | | | 21.1% |
| | Paraguay | 38 | 0 | 0 | 0 | 2 | 5.3% | 0 | 0 | 0 | 0.0% | 0 | 0 | 0 | 0 | 5.3% |
| | Uruguay | 13 | 0 | 0 | 0 | 0 | 0.0% | 0 | 1 | 0 | 0.0% | 0 | 0 | 1 | 0 | 15.4% |
| | Uruguay_IRAG | 13 | | | | 0 | 0.0% | | | 1 | | | | | 1 | 15.4% |
| Grand Total | | 16,301 | 198 | 18 | 799 | 322 | 8.2% | 31 | 44 | 44 | 0.3% | 5 | 3 | 12 | 12 | 9.1% |

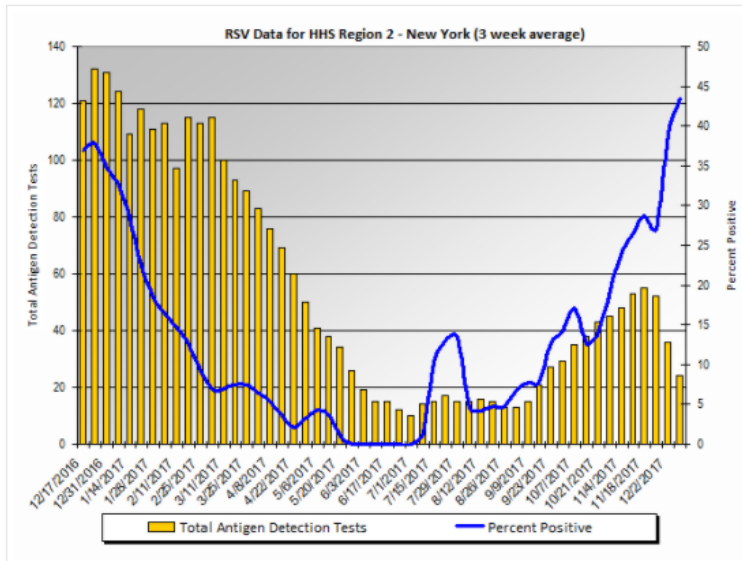


Examples from NREVSS

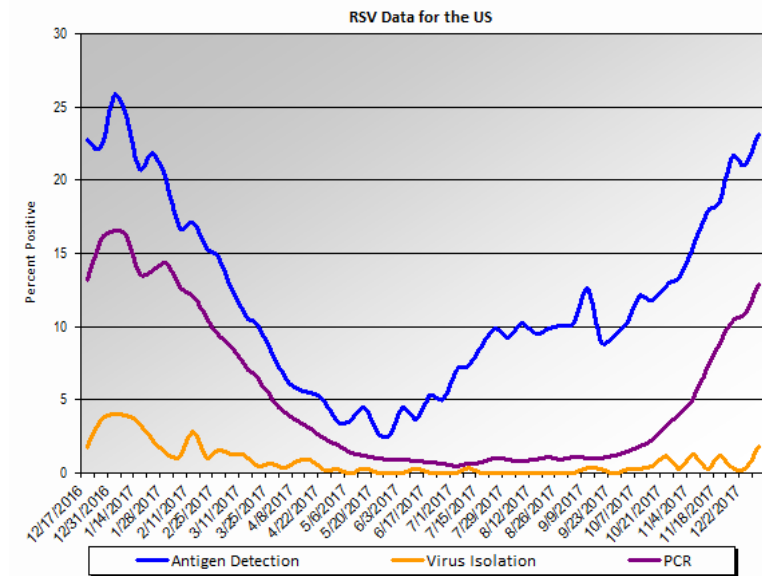
FIGURE. Respiratory syncytial virus season duration and peak, by U.S. Department of Health and Human Services Region,* and in Florida – National Respiratory and Enteric Virus Surveillance System, weeks ending July 7, 2012–June 29, 2013,¹ and weeks ending July 6, 2013–June 28, 2014²



Total Antigen Detection Tests



Respiratory Syncytial Virus (RSV)



Acknowledgements

- Julia Fitzner
- Aspen Hammond
- Paulina Sosa
- Joanna Ellis



Issues for discussion

- How can the surveillance outputs be presented more meaningfully?
 - Stratify by presence of absence of fever
 - Stratify by RSV type
- Graphs, tables or maps?
- How can the functionality of the outputs be enhanced?
- Combining RSV outputs with that for influenza
 - Integrating with FluNet