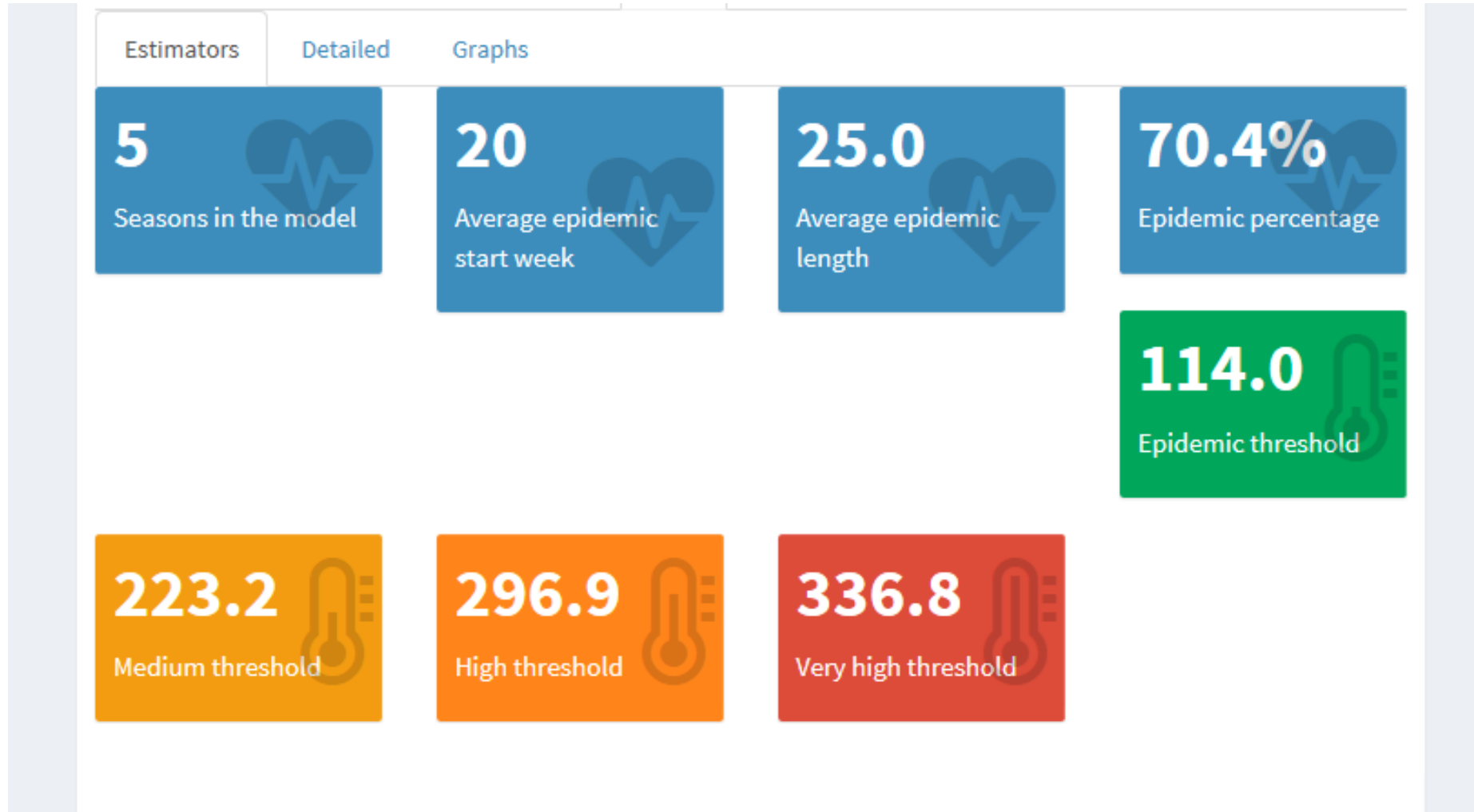




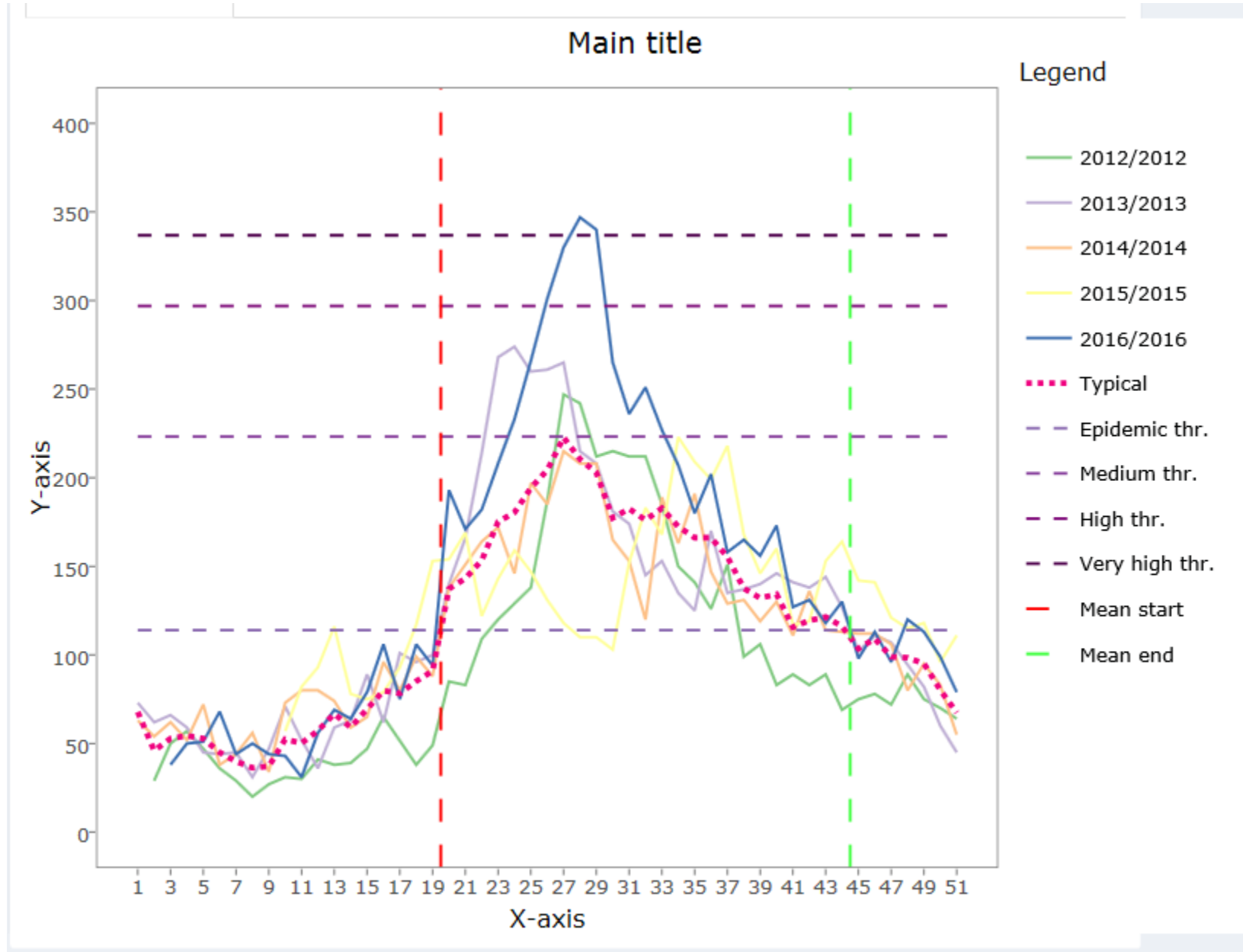
**PARAGUAY**



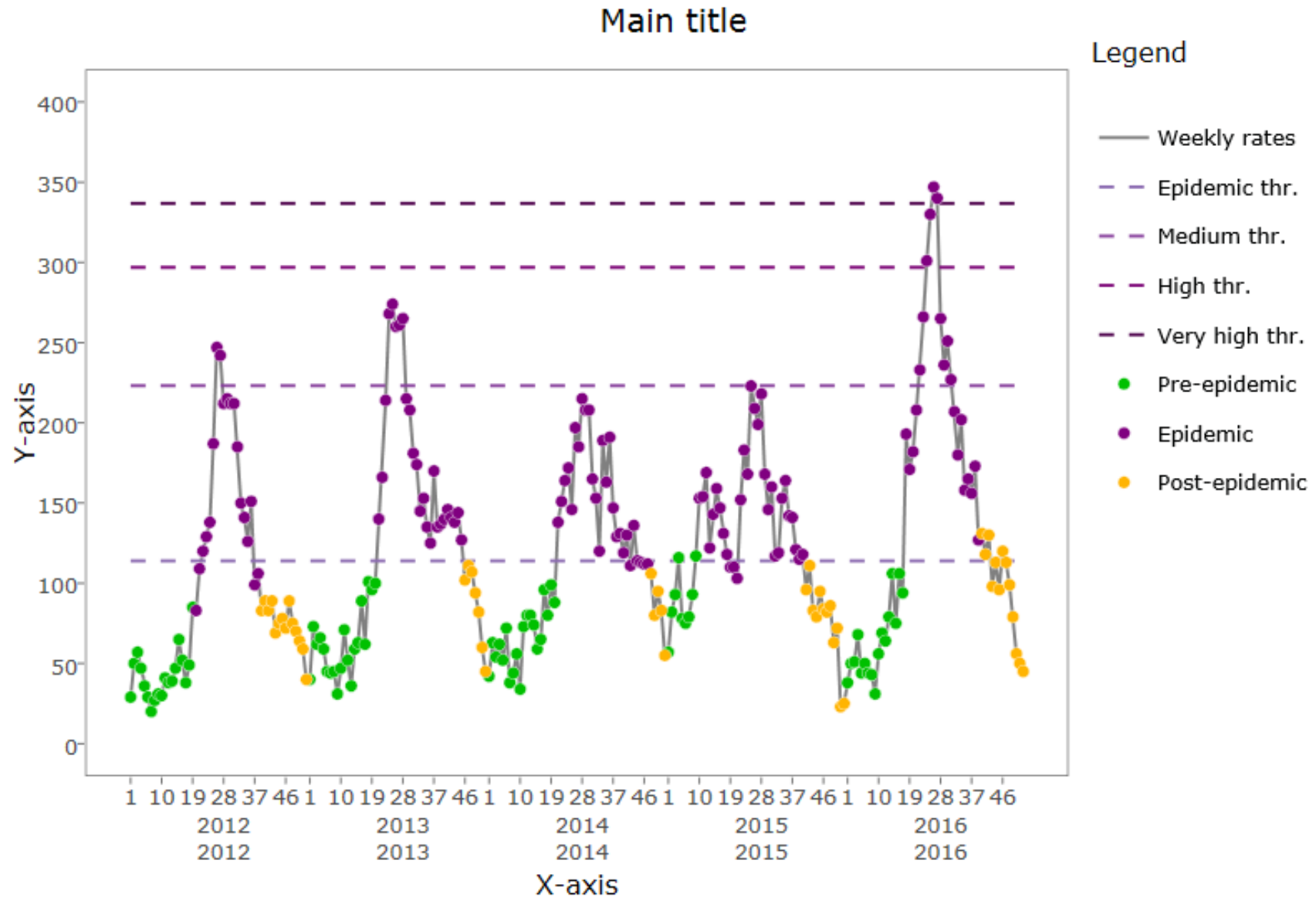
# PARAMETROS



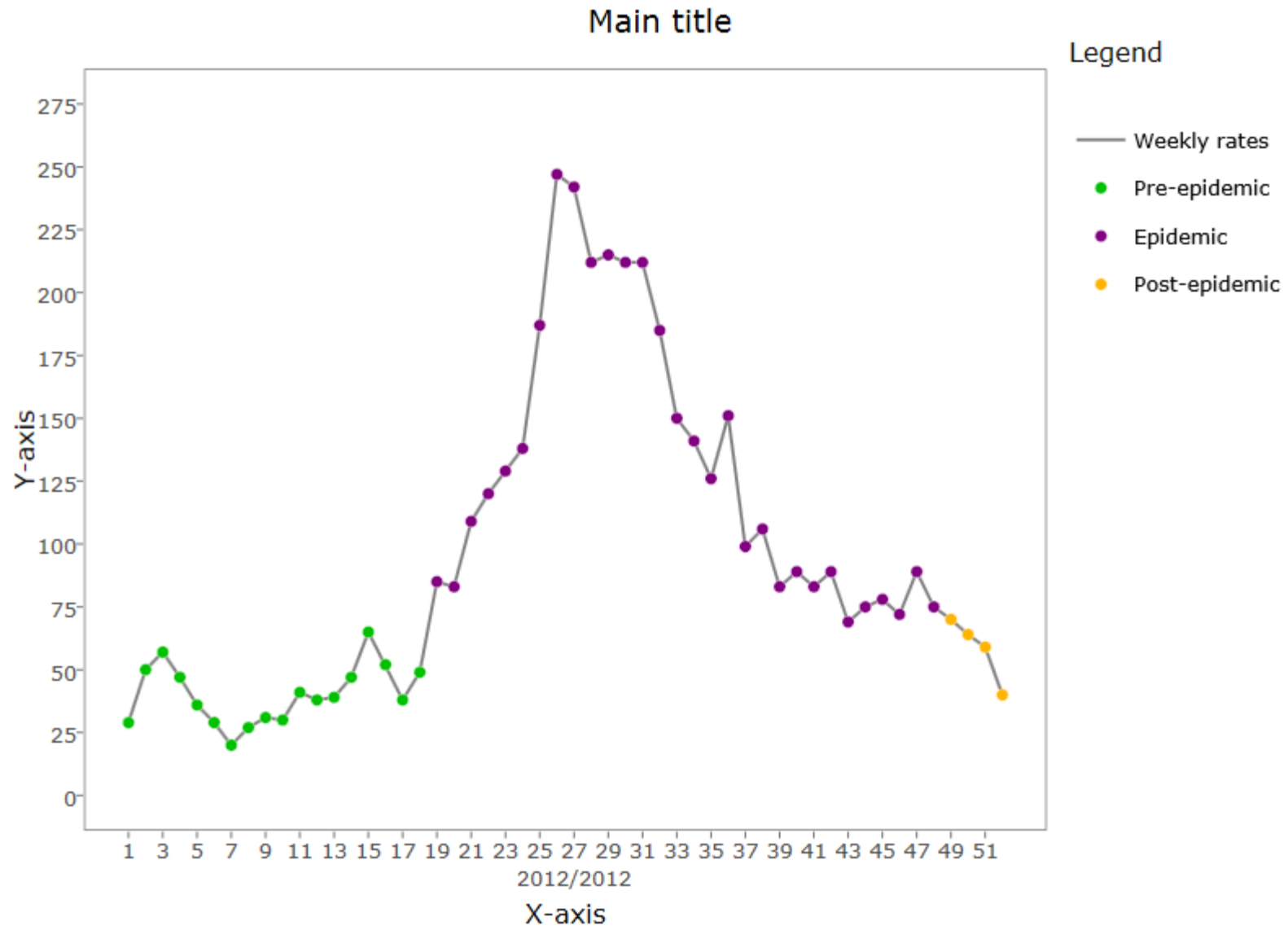
# SARI CASES



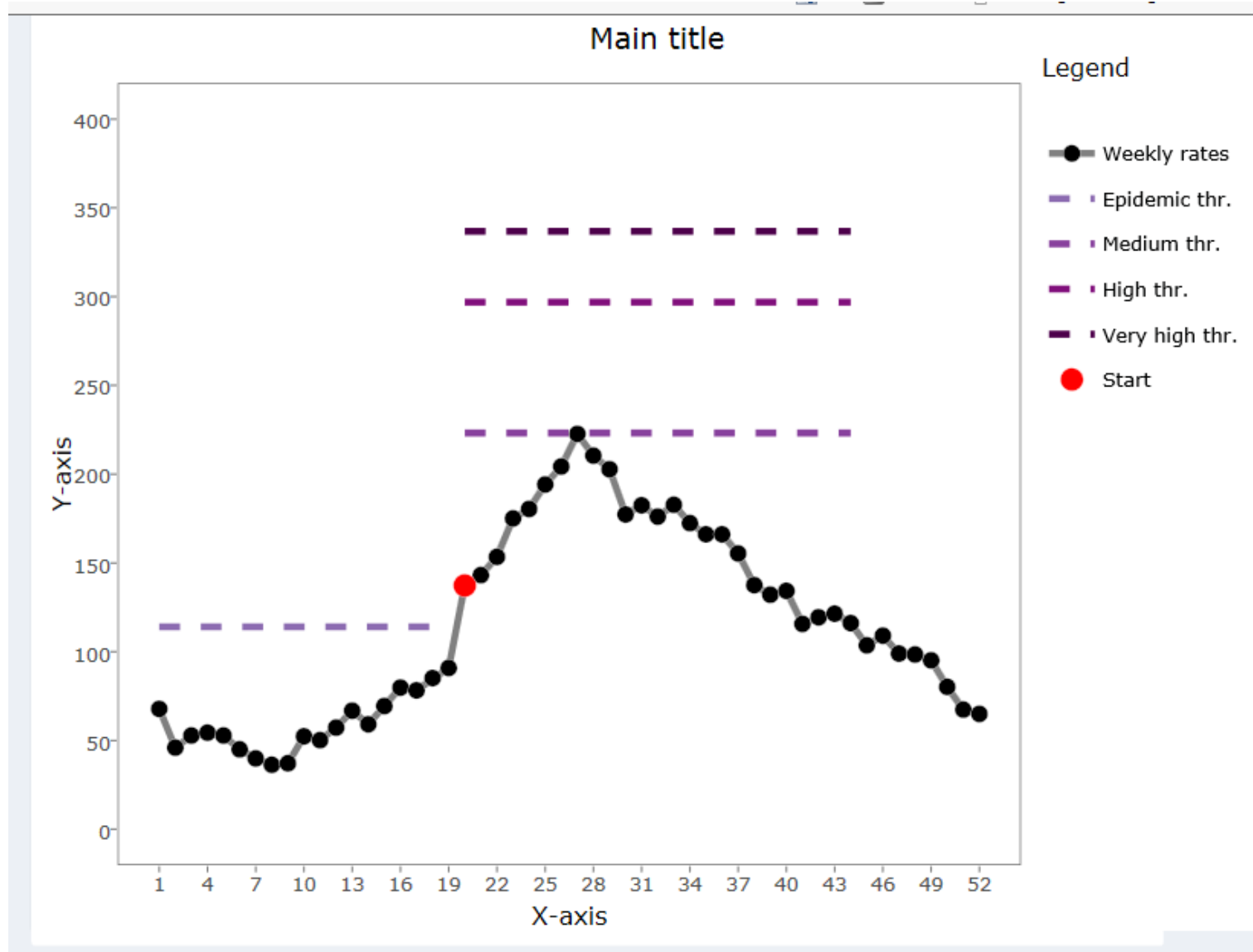
# SARI CASES



# SARI CASES



# SARI CASES



# SARI FLU (+)

Estimators

Detailed

Graphs

**4**

Seasons in the model



**22**

Average epidemic  
start week



**13.0**

Average epidemic  
length



**77.4%**

Epidemic percentage



**7.7**

Epidemic threshold



**28.0**

Medium threshold



**62.9**

High threshold

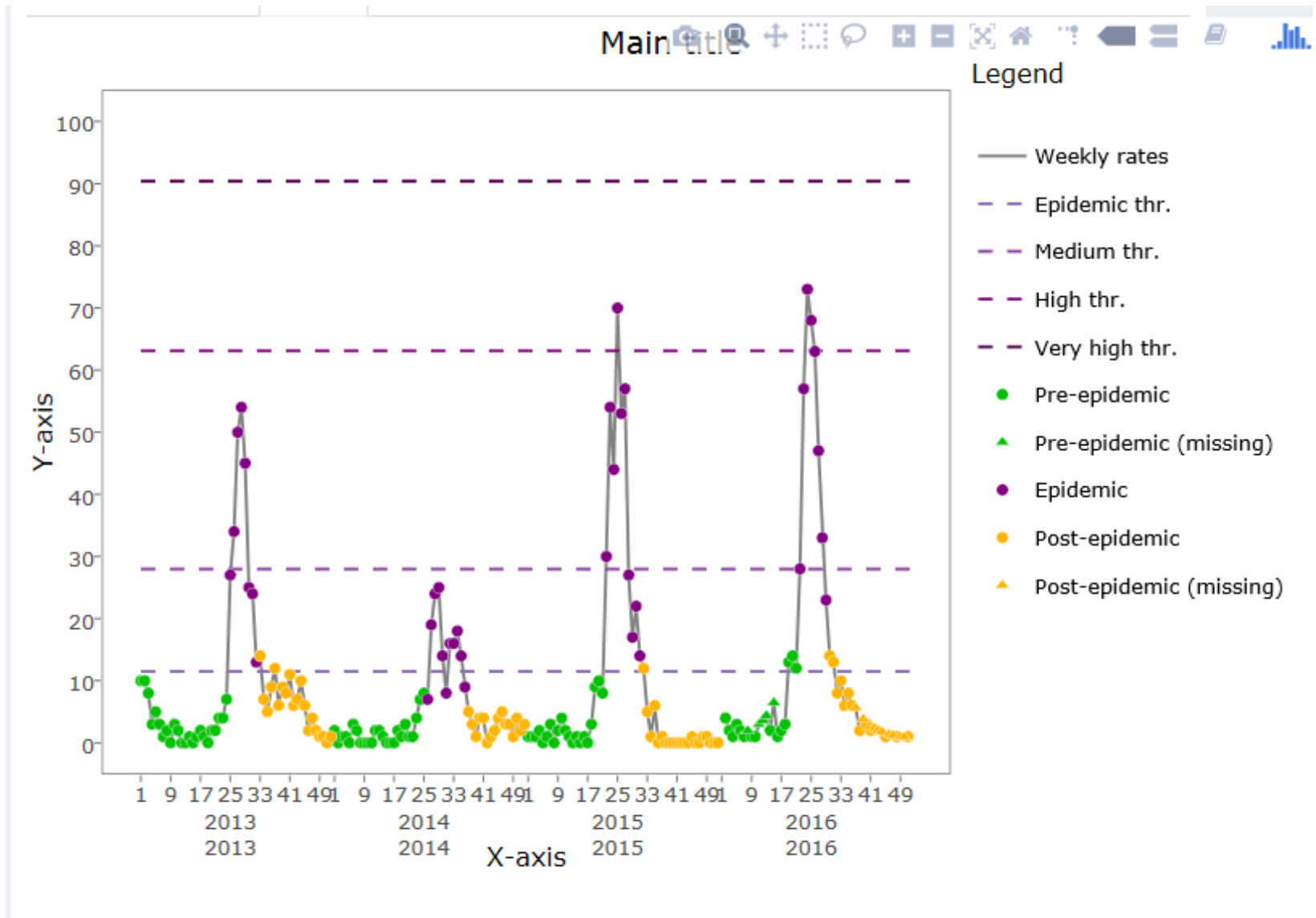


**89.9**

Very high threshold

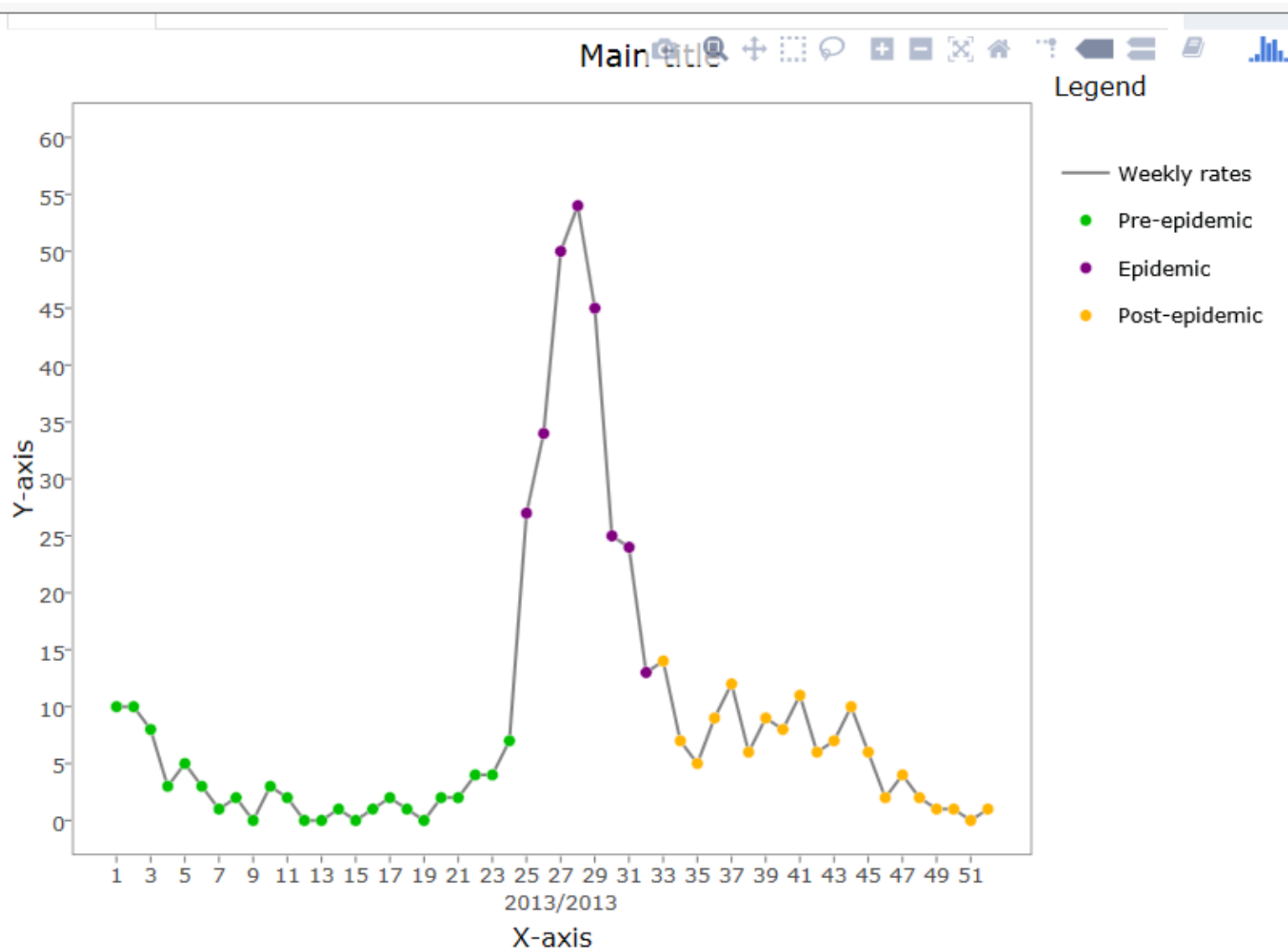


# SARI FLU (+)





# SARI FLU (+)

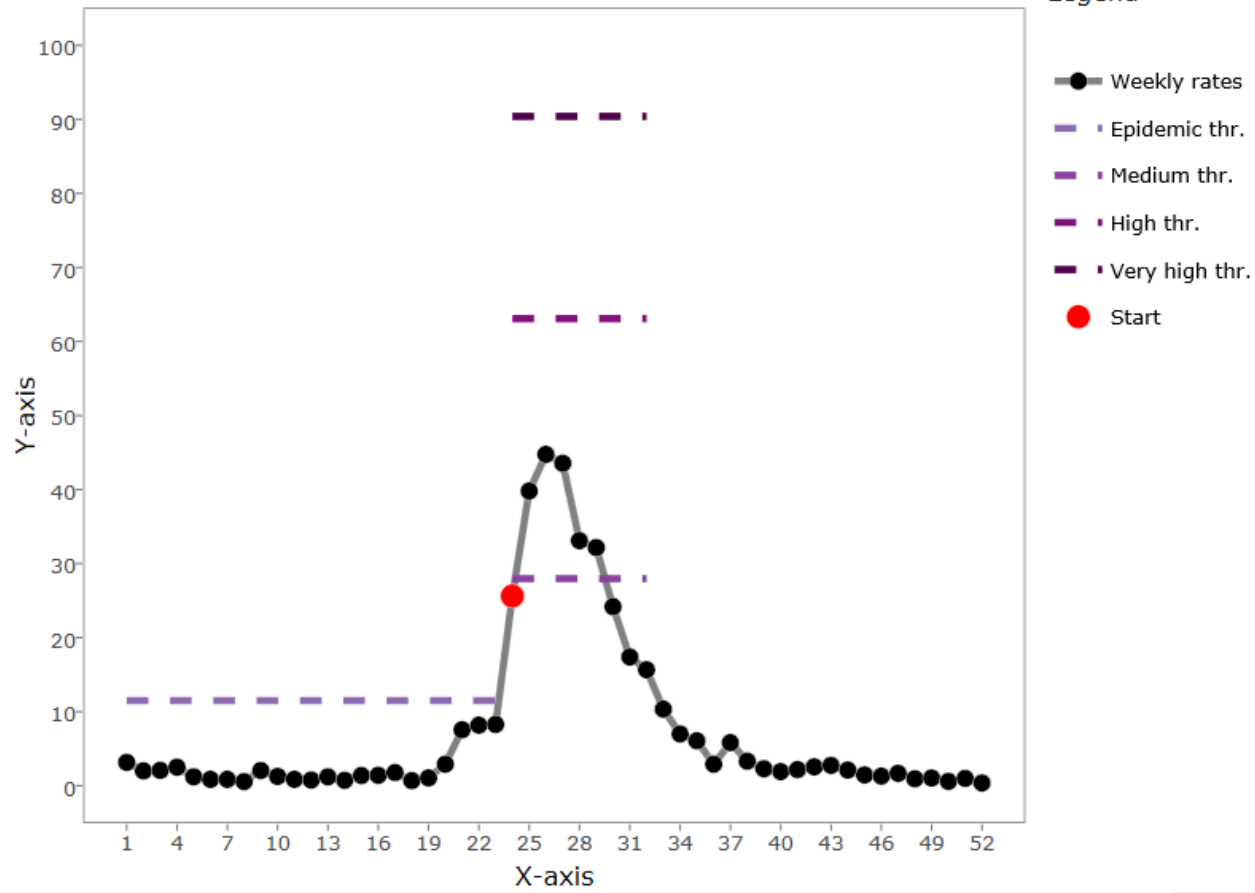


# SARI FLU (+)

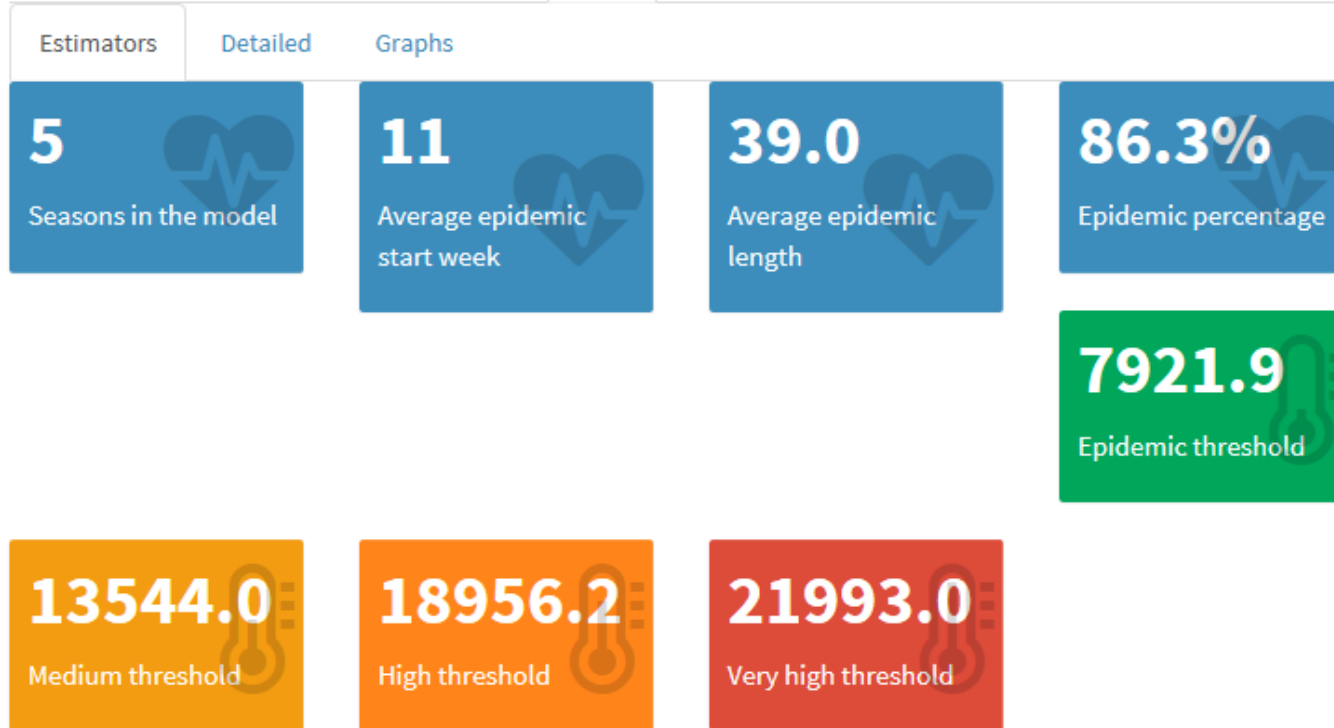
Moving epidemics

Average curve

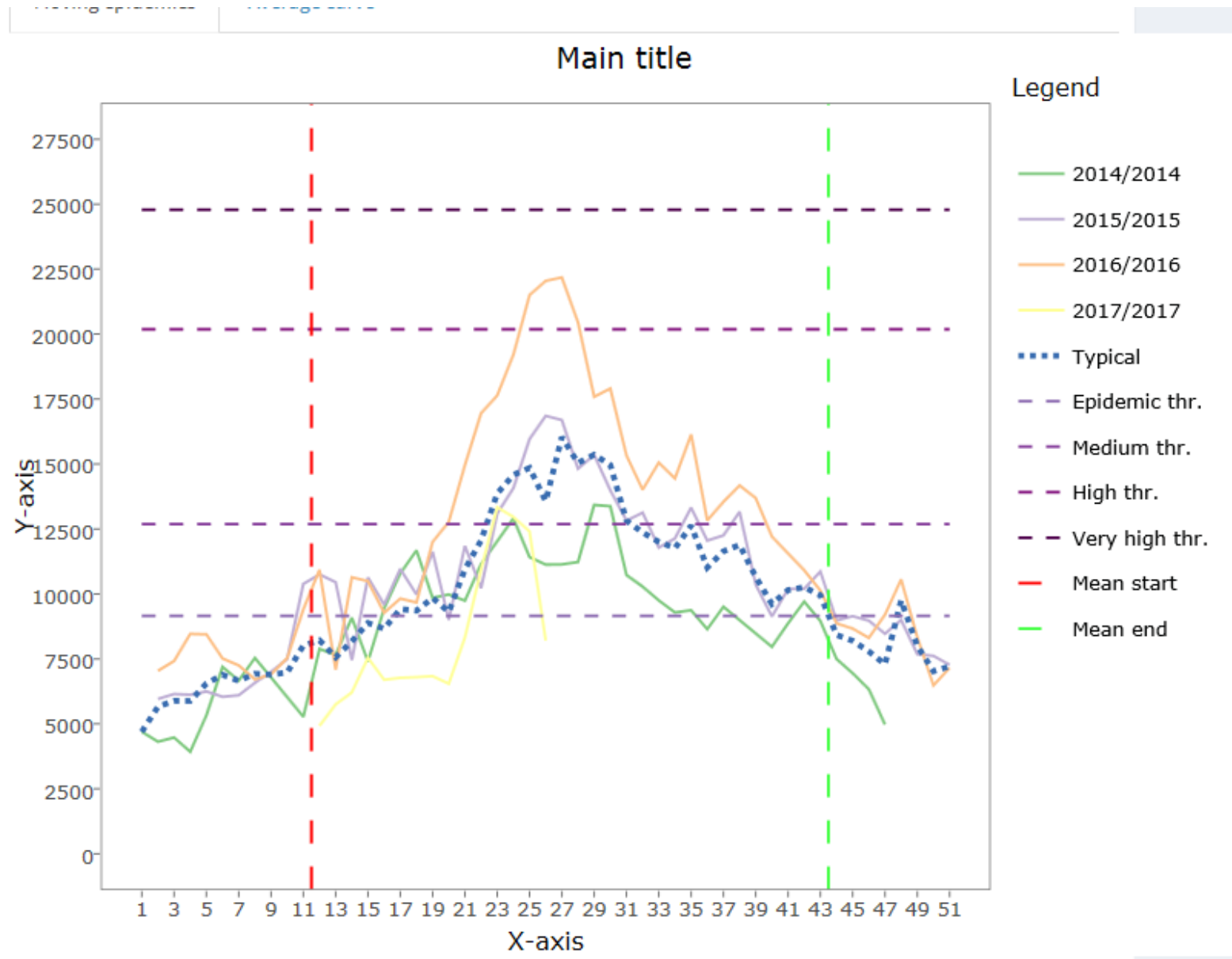
Main title



# ILI UNIVERSAL



# ILI UNIVERSAL

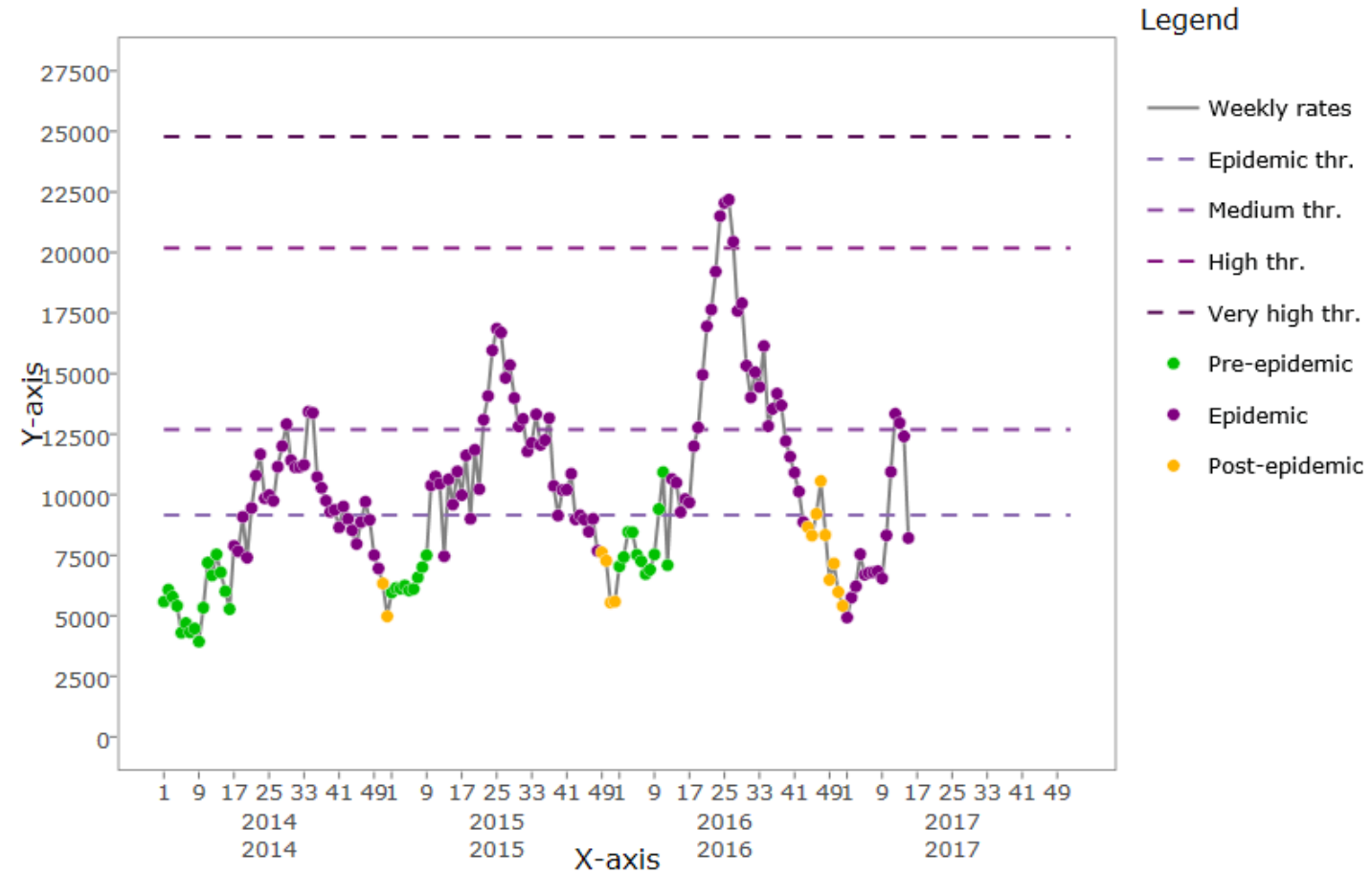


# ILI UNIVERSAL

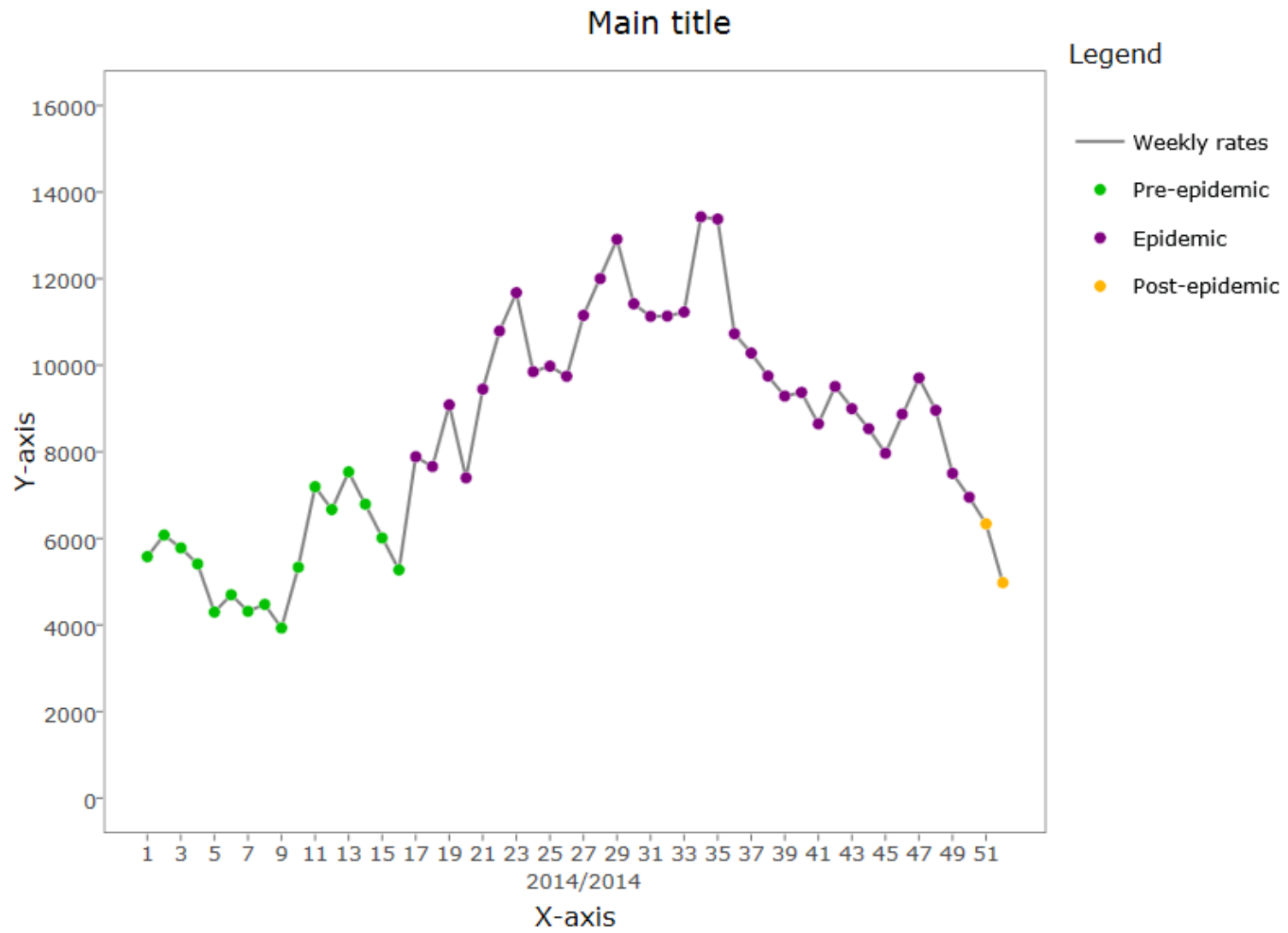
Summary, graphs, goodness and optimization of the MEM model

Data Seasons Series Timing MEM Goodness Optimize

Main title

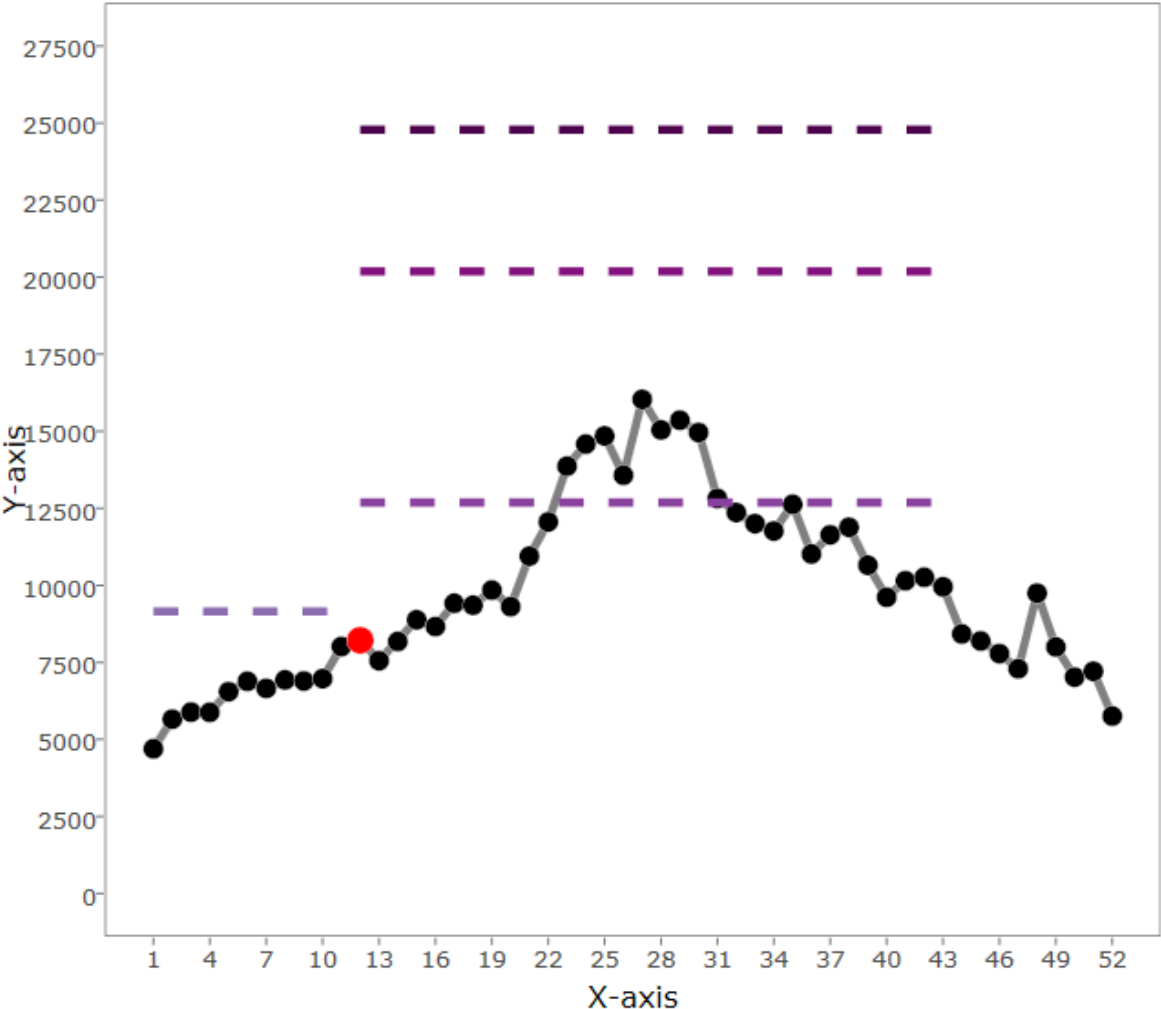


# ILI UNIVERSAL



# ILI UNIVERSAL

Main title



Legend

- Weekly rates
- ▬ Epidemic thr.
- ▬ Medium thr.
- ▬ High thr.
- ▬ Very high thr.
- Start