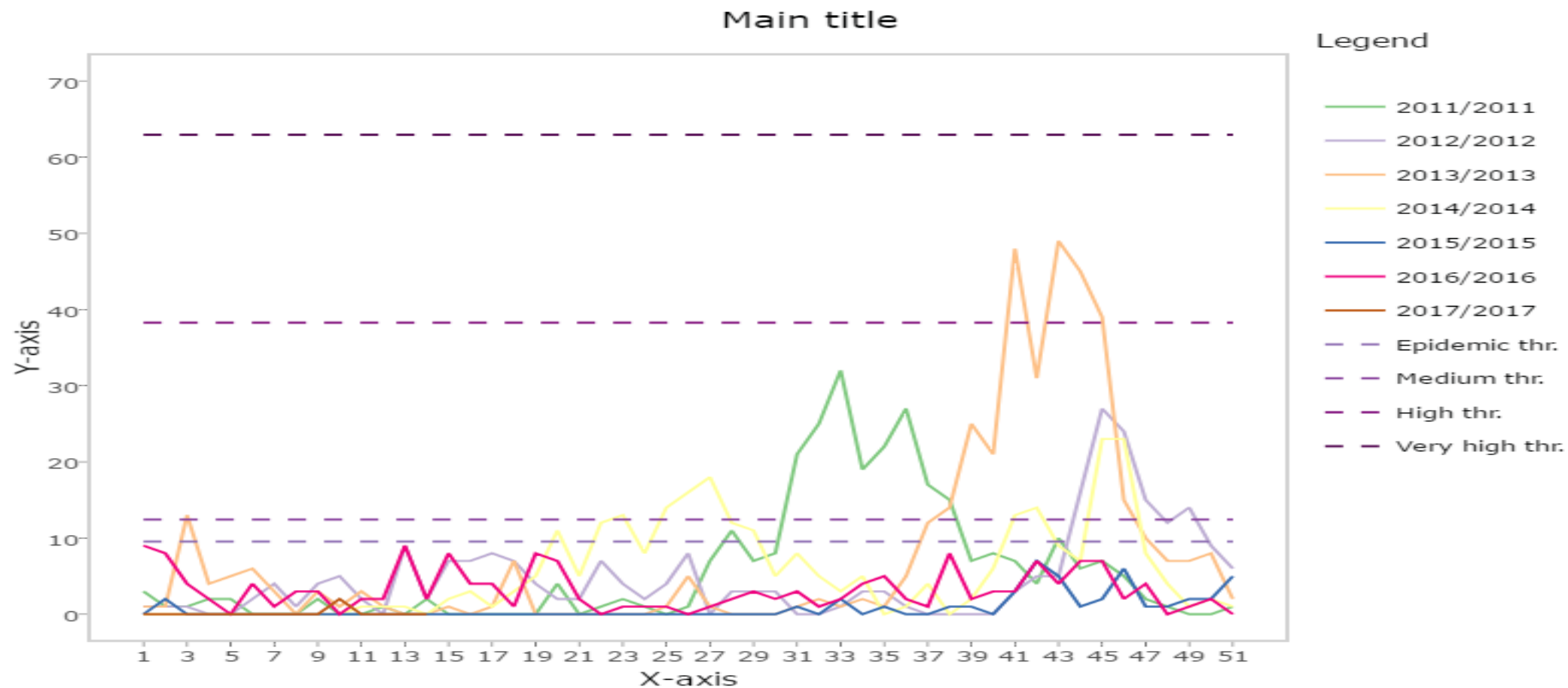
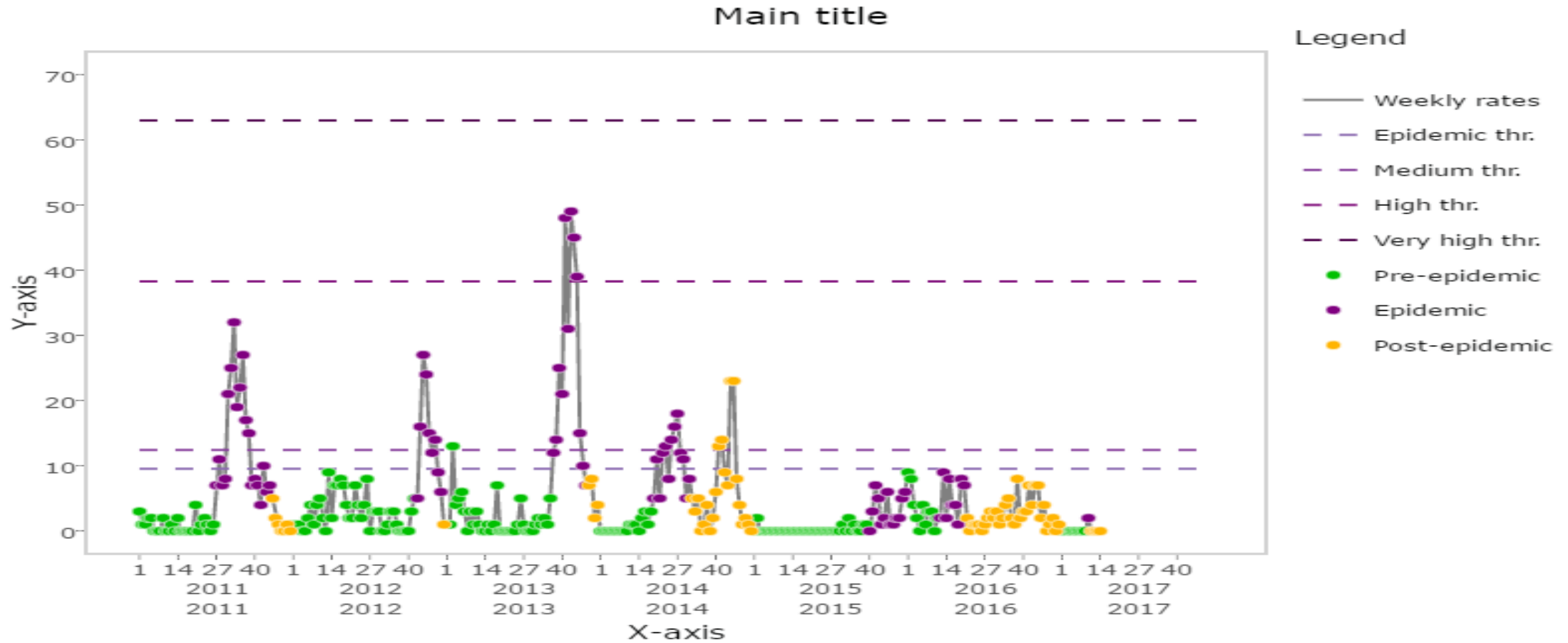


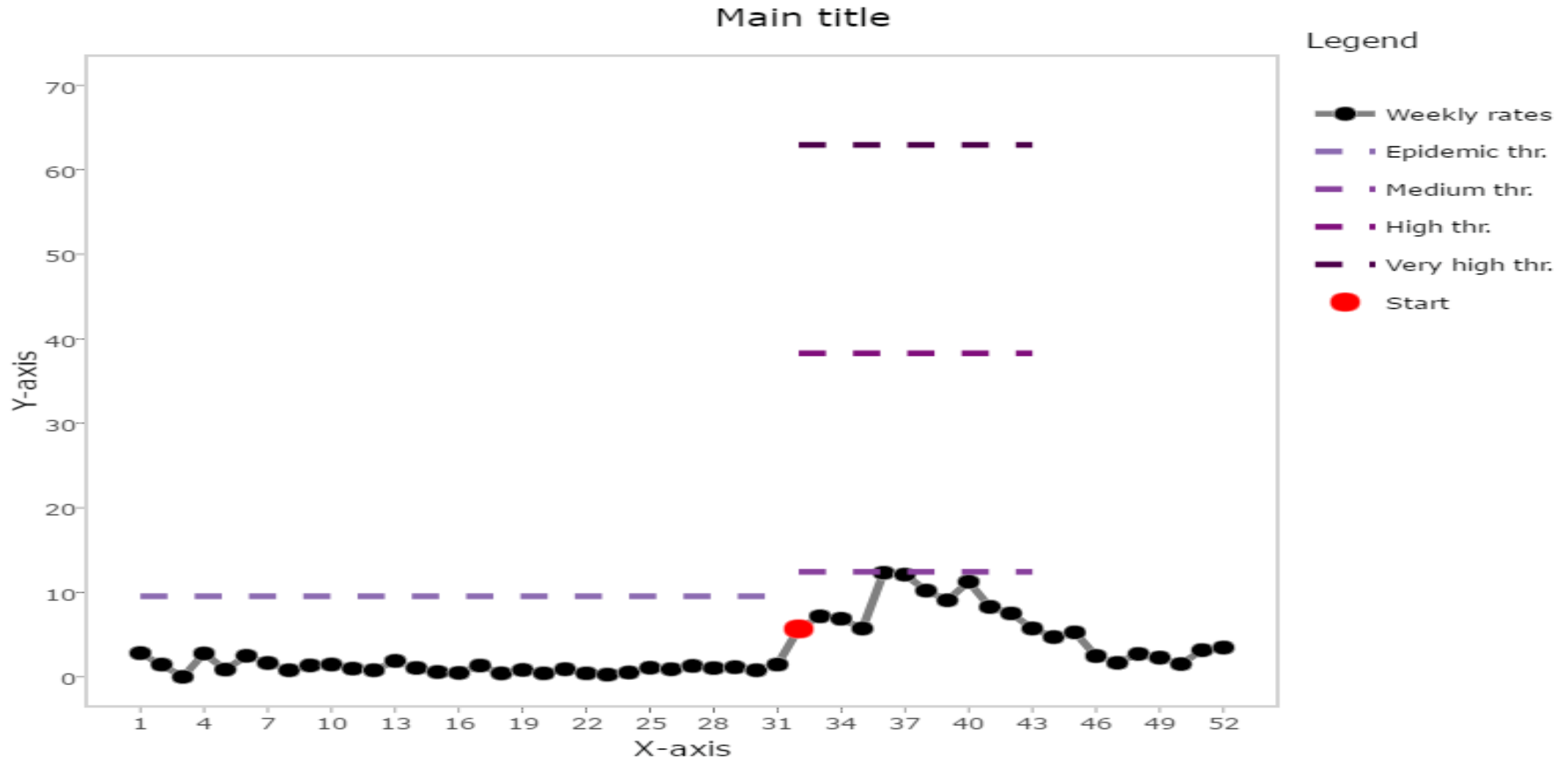
Estacionalidad de Influenza, Honduras 2011-2016



Umbral epidémico de Influenza, Honduras 2011-2016



Curva promedio de Influenza, Honduras 2011-2016



Metodo de estacionalidades móviles de Influenza, Honduras 2011-2016

The screenshot displays the 'The Moving Epidemics Method Shiny Web Application' interface. The browser window shows multiple tabs, including 'MEM dashb' and 'transformse'. The application title is 'The Moving Epidemics Method Shiny Web Application'. The main content area is divided into several sections:

- Check & describe** (selected)
- Model** (selected)
- Surveillance**
- Visualize**
- MEM**

Below these tabs, there is a summary section: 'Summary, graphs, goodness and optimization of the MEM model'. This section includes sub-tabs for 'Data', 'Seasons', 'Series', 'Timing', 'MEM', 'Goodness', and 'Optimize'. Under the 'MEM' sub-tab, there are further sub-tabs for 'Estimators', 'Detailed', and 'Graphs'.

The main display area features eight colored cards representing model parameters and thresholds:

Parameter	Value	Icon
Seasons in the model	6	Heart rate monitor
Average epidemic start week	32	Heart rate monitor
Average epidemic length	12.5	Heart rate monitor
Epidemic percentage	64.7%	Heart rate monitor
Epidemic threshold	9.5	Thermometer
Medium threshold	12.4	Thermometer
High threshold	38.3	Thermometer
Very high threshold	62.9	Thermometer

On the left side, there is a 'Load file' section with a 'Browse...' button and a file named 'Influenza.xlsx' which has been 'Upload complete'. Below this is a 'Dataset' section with a dropdown menu set to 'Influenza'. Further down are 'First Week' (dropdown set to '1') and 'Last Week' (dropdown set to '53'). A 'Transform' section has a dropdown menu set to 'No transformation'. At the bottom left, there is a 'Model' section with a '+' button.

On the right side, there are two blue buttons: 'Graph text' and 'Graph options', both with a '+' icon.

The Windows taskbar at the bottom shows several open files: 'newplot (4).png', 'newplot (3).png', 'newplot (2).png', 'newplot (1).png', and 'newplot.png'. The system tray on the right shows the time '12:50 p. m.' and the date '25/5/2017'.