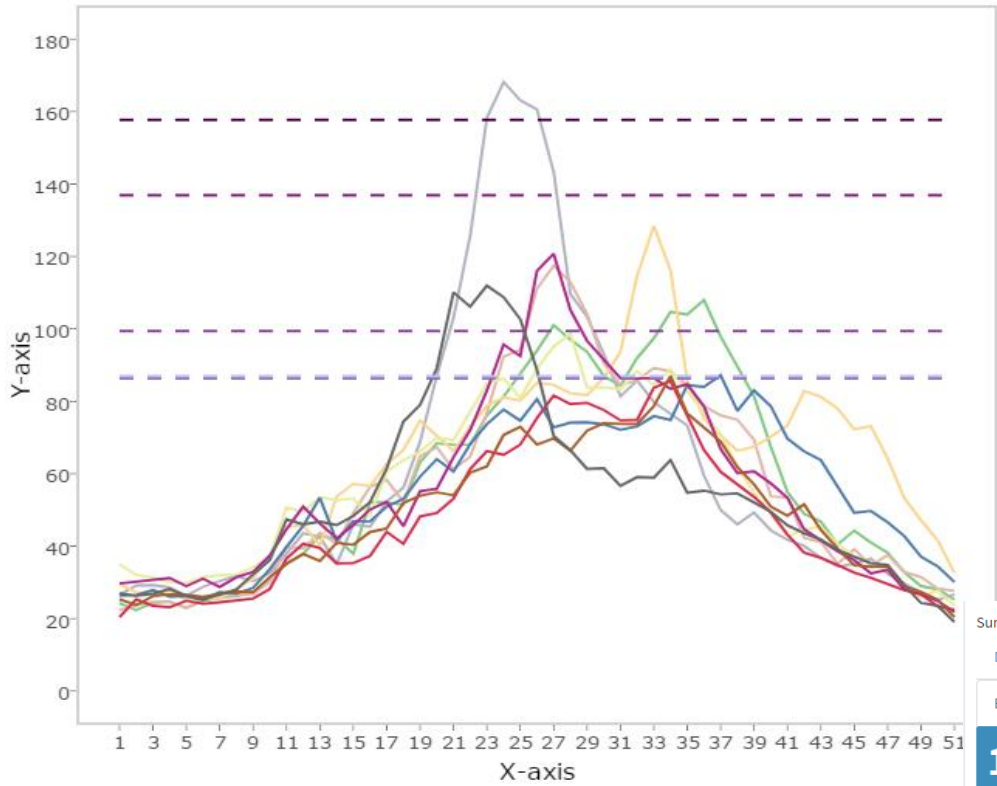


ETI

Main title



Legend

- 2006/2006
- 2007/2007
- 2008/2008
- 2010/2010
- 2011/2011
- 2012/2012
- 2013/2013
- 2014/2014
- 2015/2015
- 2016/2016
- - Epidemic thr.
- - Medium thr.
- - High thr.

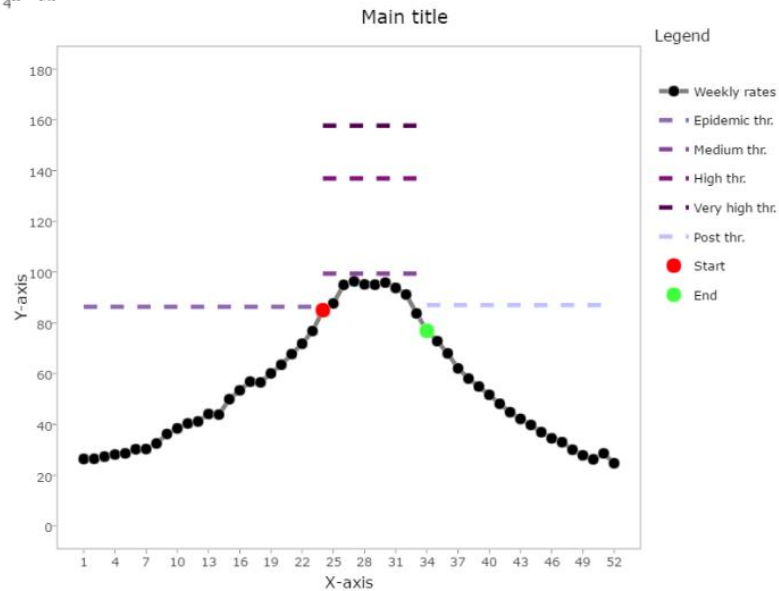
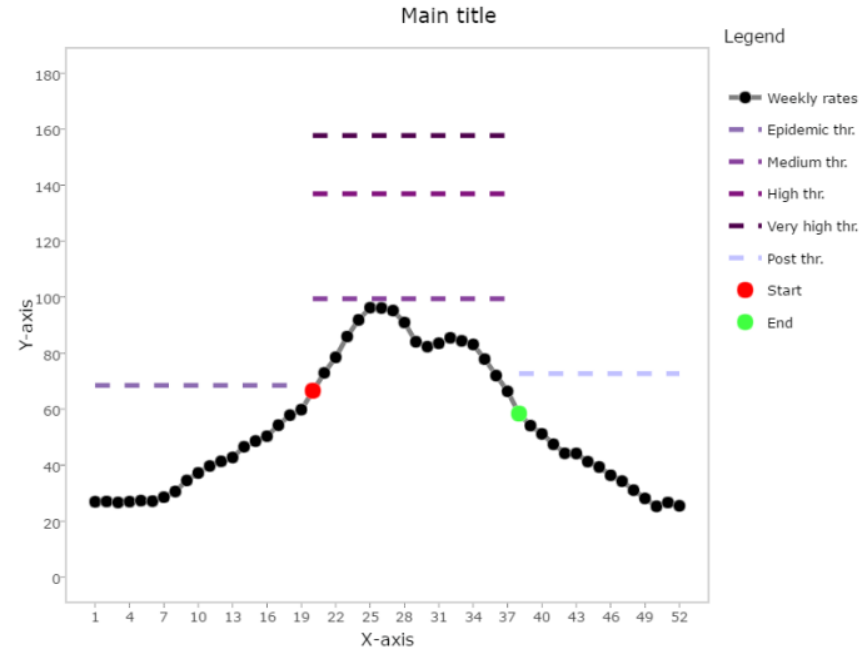
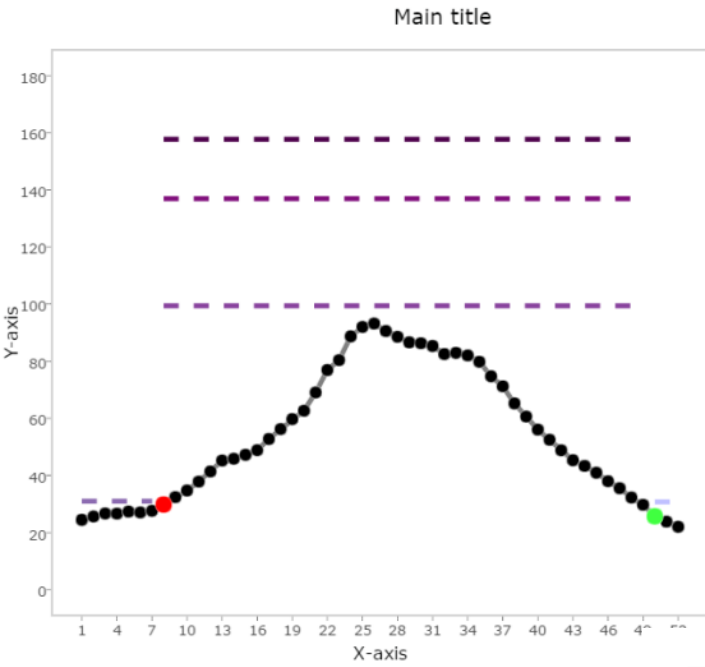
Summary, graphs, goodness and optimization of the MEM model

- Data
- Seasons
- Series
- Timing
- MEM
- Goodness
- Optimize

- Estimators
- Detailed
- Graphs

<p>10</p> <p>Seasons in the model</p>	<p>24</p> <p>Average epidemic start week</p>	<p>10.5</p> <p>Average epidemic length</p>	<p>37.4%</p> <p>Epidemic percentage</p>
<p>86.3</p> <p>Epidemic threshold</p>			
<p>99.4</p> <p>Medium threshold</p>	<p>136.9</p> <p>High threshold</p>	<p>157.7</p> <p>Very high threshold</p>	

ETI



Casos Flu (+)

