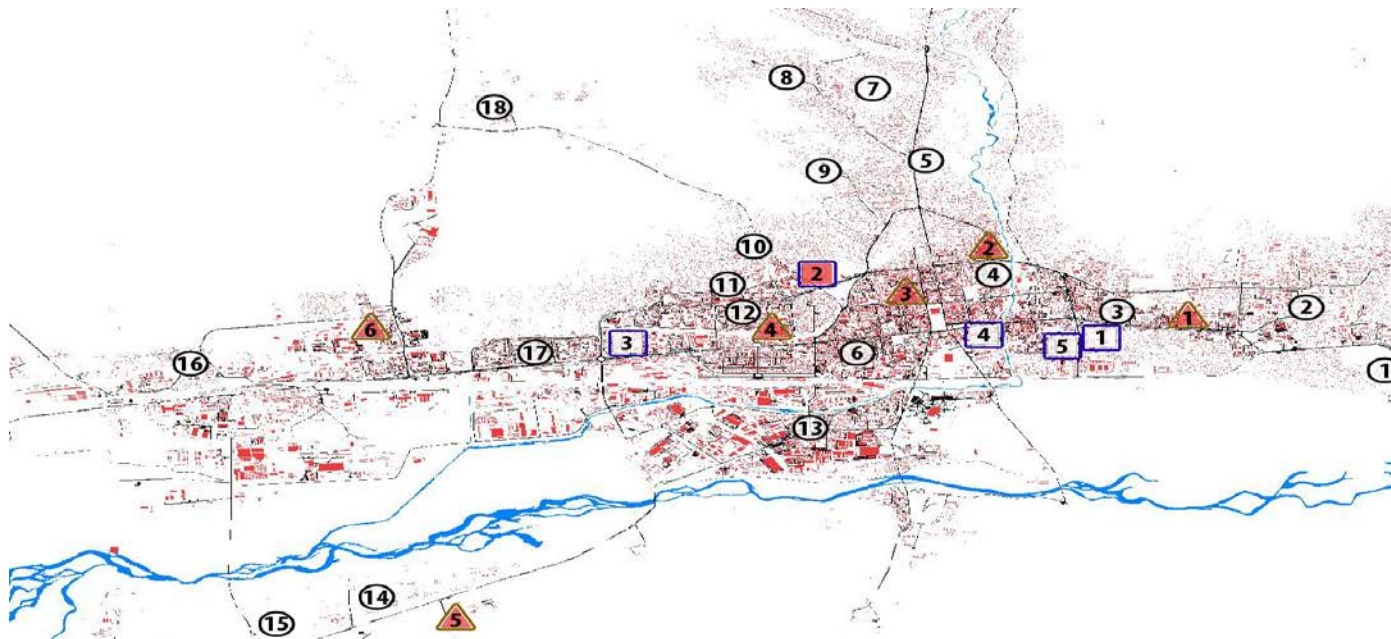


Mid-term Review of the RSV Surveillance Pilot

NIC, Mongolia

Influenza Surveillance Network in Ulaanbaatar City, 2017 (RSV sites in red color)



- Reference Centers: 2. Maternal and Child Health Research Center (MCHRC);
- ▲ City District General Hospitals (DGH): 1. Bayanzurkh DGH; 2. Sukhbaatar DGH; 3. Chingeltei DGH; 4. Bayangol I
5. Khan-Uul DGH; 6. Songinokhairkhan DGH; 7. Baganuur DGH;

The sentinel sites have been selected in the capital city including 7 districts' General Hospitals and the National Center for Maternal and Child;

Challenges

In epidemiology:

- Collection of samples by fixed age groups has difficulties especially in children aged under 6 months and in elderly ≥ 65 years age groups.
- Workload for physicians to fill out the forms during the peak season (RSV, sARI and Patient Record forms and others);
- May there is need to expand the existing online reporting system for ILI and sARI adding the RSV surveillance data.

Continued...

In virology:

- Un-completed specimen submission form; It requires to call back to physicians.
- Limited storage spaces in the -70 °C freezers for the 3-4 vials of aliquot.

In both:

- There is need to conduct supportive supervisions to monitor the sites and give the recommendations on the checking the patient selection and sample collection techniques and accuracy of completion of the forms.

**THANK YOU FOR YOUR KIND
ATTENTION**