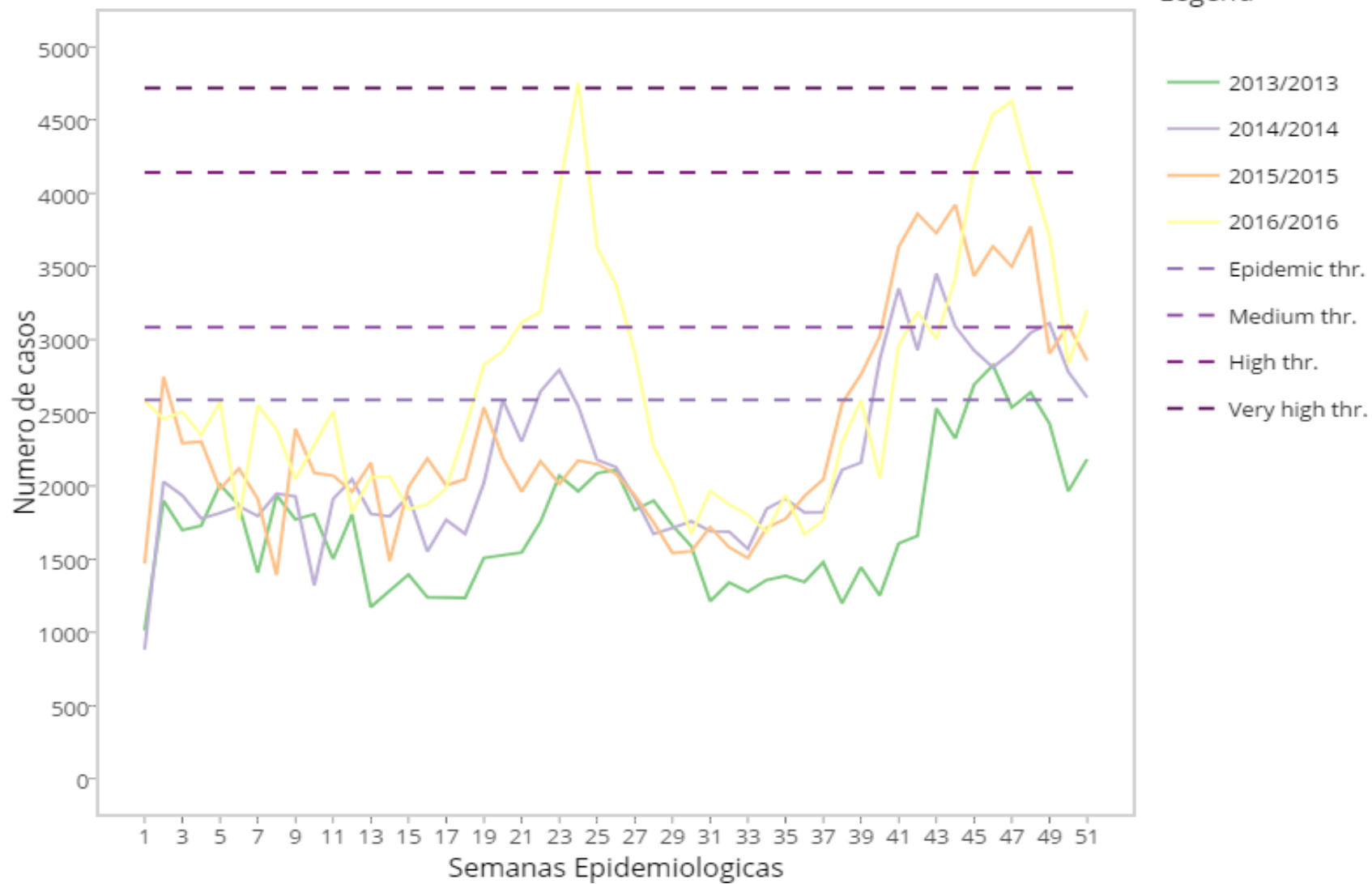


Analisis de los datos de vigilancia de los IRA, Haiti, 2013-2016

Estacionalidad de IRA, Haití, 2013-2016



Load file

Browse... OPS OMS MEM SAR

Upload complete

Dataset

Dataset

ARI

First Week

1

Last Week

53

Transform

Two waves (expectec

The Moving Epidemics Method Shiny Web Application

Check & describe **Model** Surveillance Visualize MEM


Summary, graphs, goodness and optimization of the MEM model

Data Seasons Series Timing **MEM** Goodness Optimize


Estimators Detailed Graphs

<p>9</p> <p>Seasons in the model</p>	<p>11</p> <p>Average epidemic start week</p>	<p>15.0</p> <p>Average epidemic length</p>	<p>91.4%</p> <p>Epidemic percentage</p>
		<p>1406.3</p> <p>Epidemic threshold</p>	<p>2964.6</p> <p>Medium threshold</p>
<p>4245.3</p> <p>High threshold</p>	<p>4975.4</p> <p>Very high threshold</p>		


0.93
Sensitivity




0.86
Specificity



0.68
Positive predictive value



0.97
Negative predictive value



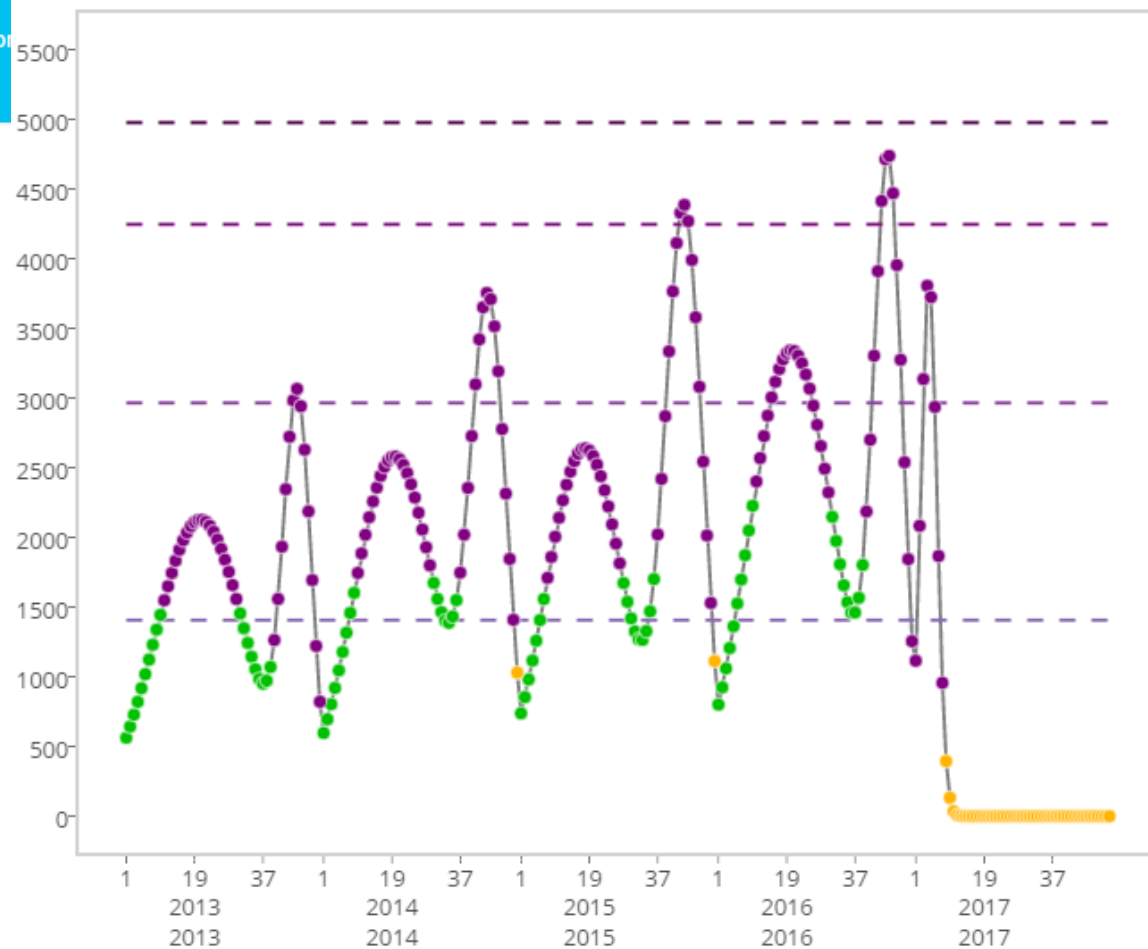
0.88
Percent agreement



0.72
Matthews correlation coefficient

Modelización de las dos temporadas de IRA, Haití, 2013-2016

Legend



- Weekly rates
- - Epidemic thr.
- - Medium thr.
- - High thr.
- - Very high thr.
- Pre-epidemic
- Epidemic
- Post-epidemic

Umbrales de IRA, Haiti, 2013-2014

Legend

