

CUBA 2012-2016

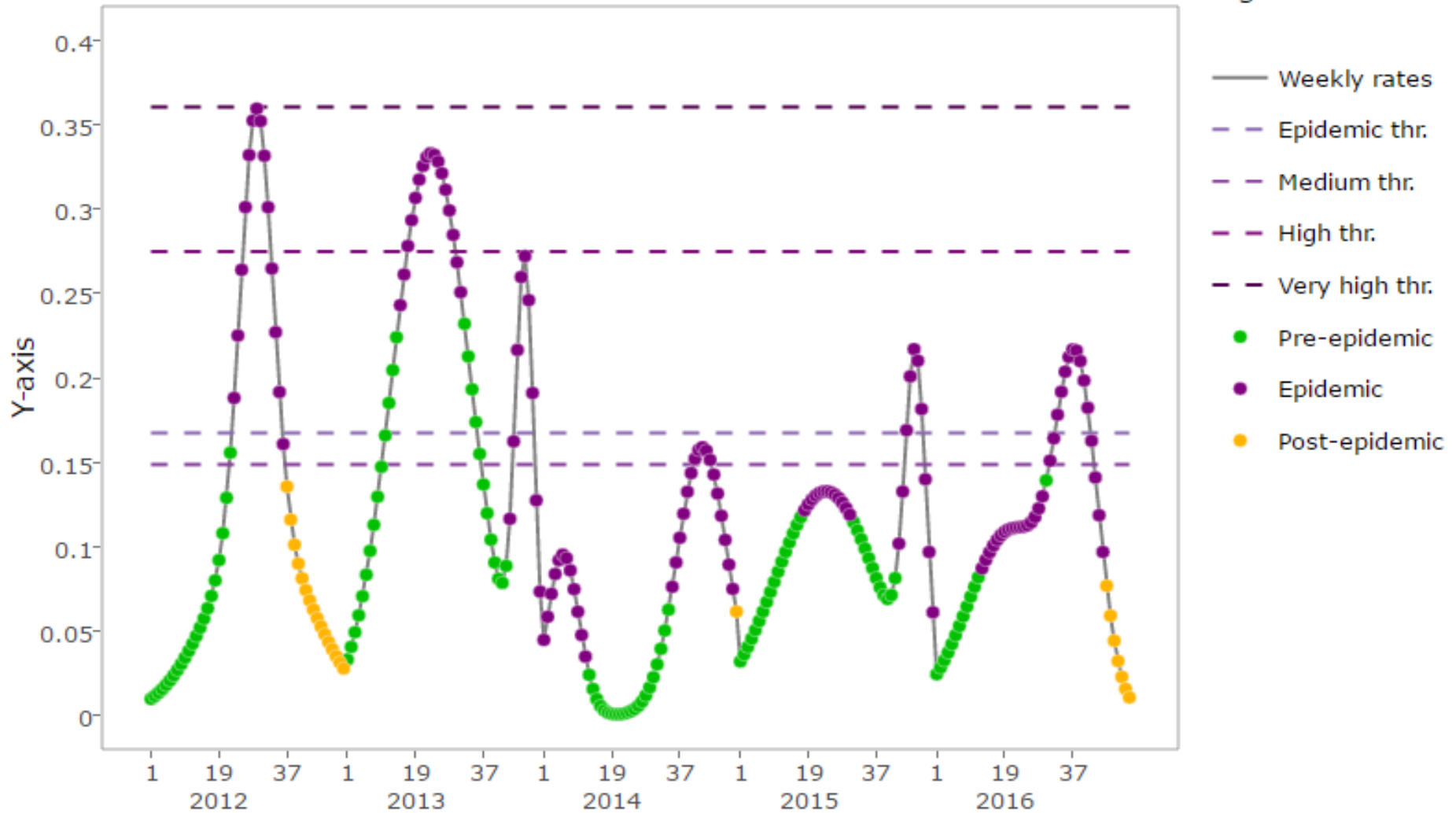
% Positividad

Influenza

# MEM

Main title

Legend



# Estimaciones

Summary, graphs, goodness and optimization of the MEM model

Data

Seasons

Series

Timing

MEM

Goodness

Optimize

Estimators

Detailed

Graphs

**10**

Seasons in the model



**24**

Average epidemic  
start week



**13.0**

Average epidemic  
length



**84.8%**

Epidemic percentage



**0.2**

Epidemic threshold



**0.1**

Medium threshold



**0.3**

High threshold



**0.4**

Very high threshold



# Sensibilidad Especificidad VPP VPN

Data

Seasons

Series

Timing

MEM

Goodness

Optimize

Indicators

Detailed

0.24

Sensitivity

0.96

Specificity

0.64

Positive predictive  
value

0.80

Negative predictive  
value

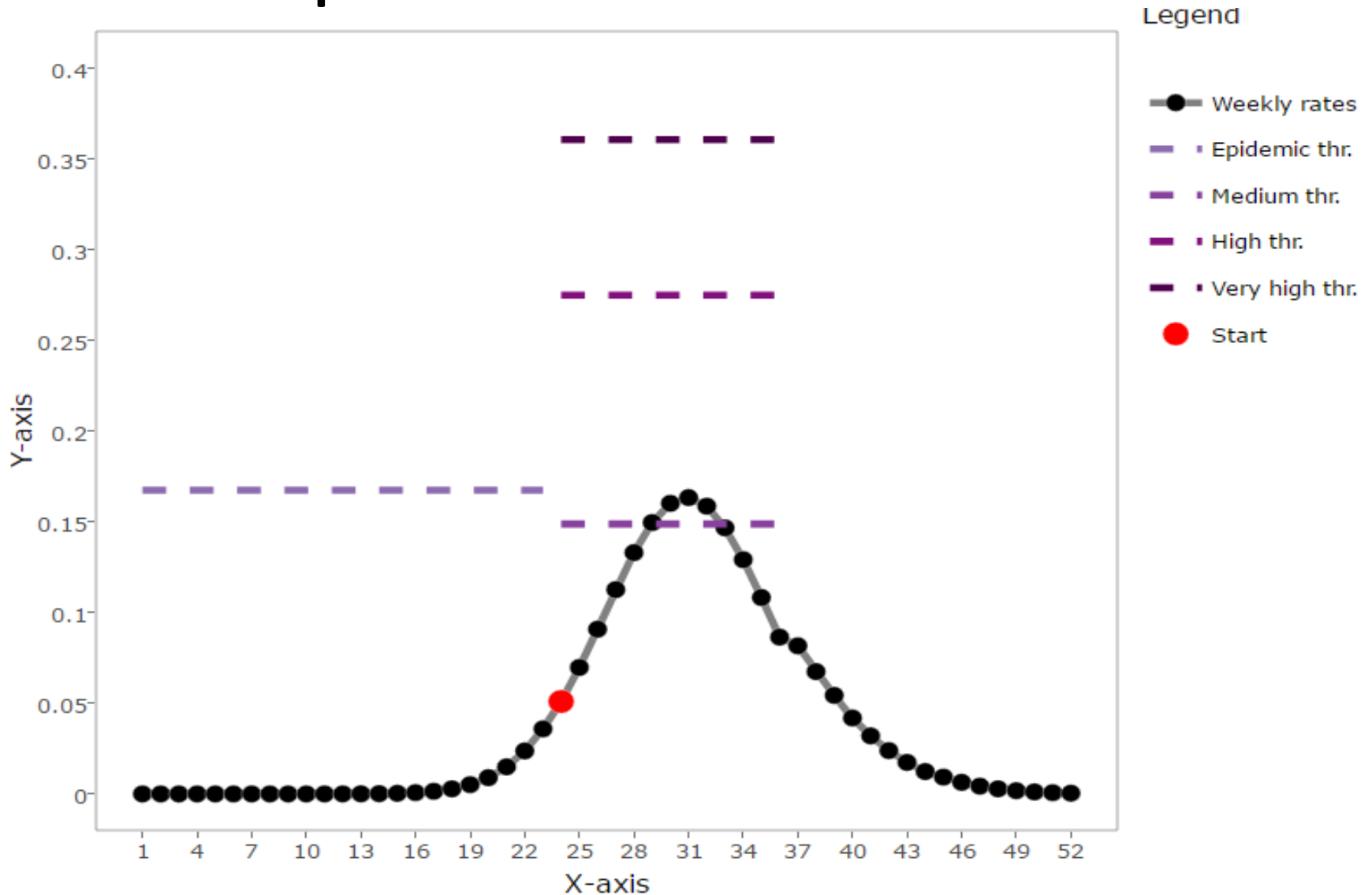
0.79

Percent agreement

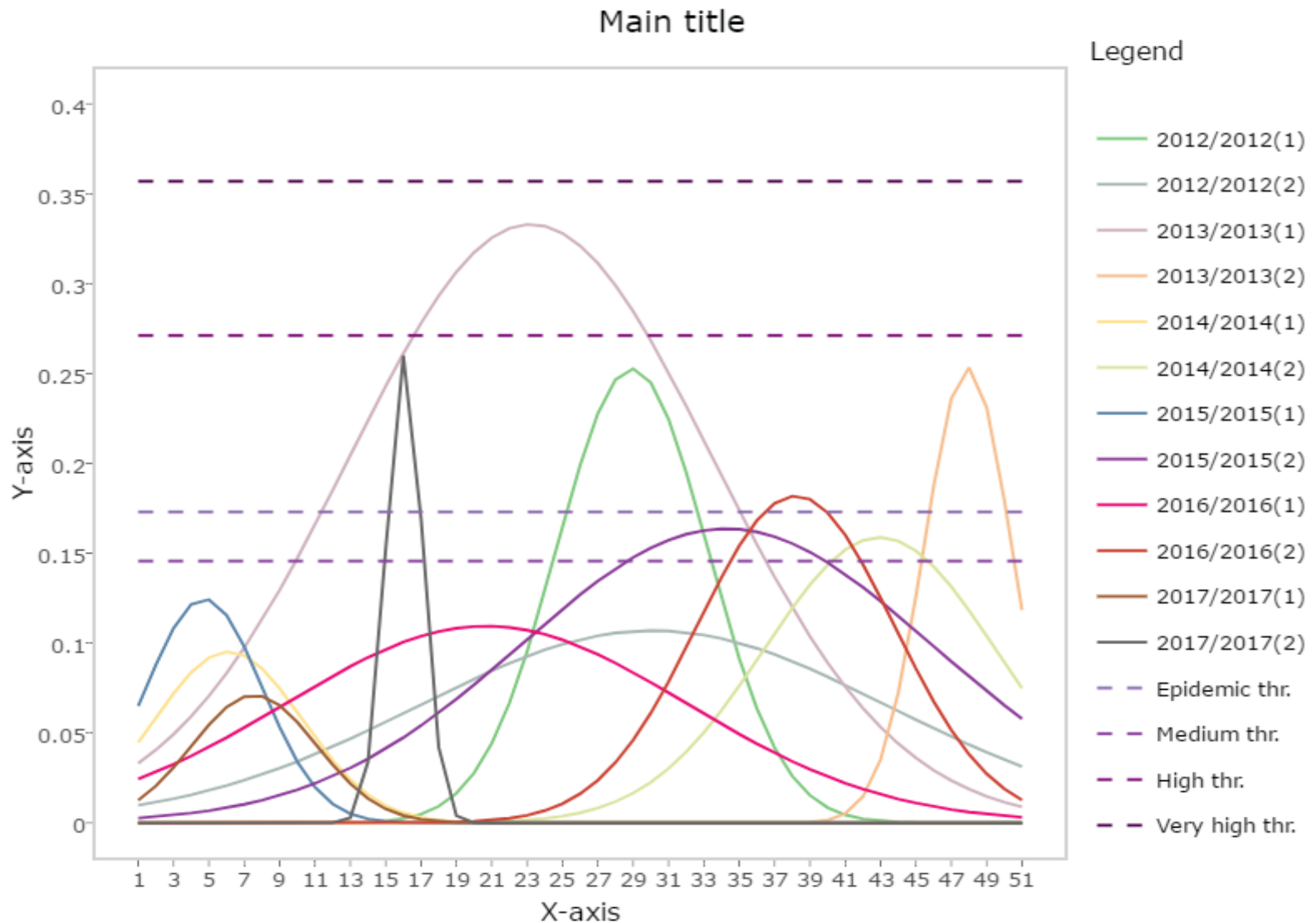
0.29

Matthews correlation  
coefficient

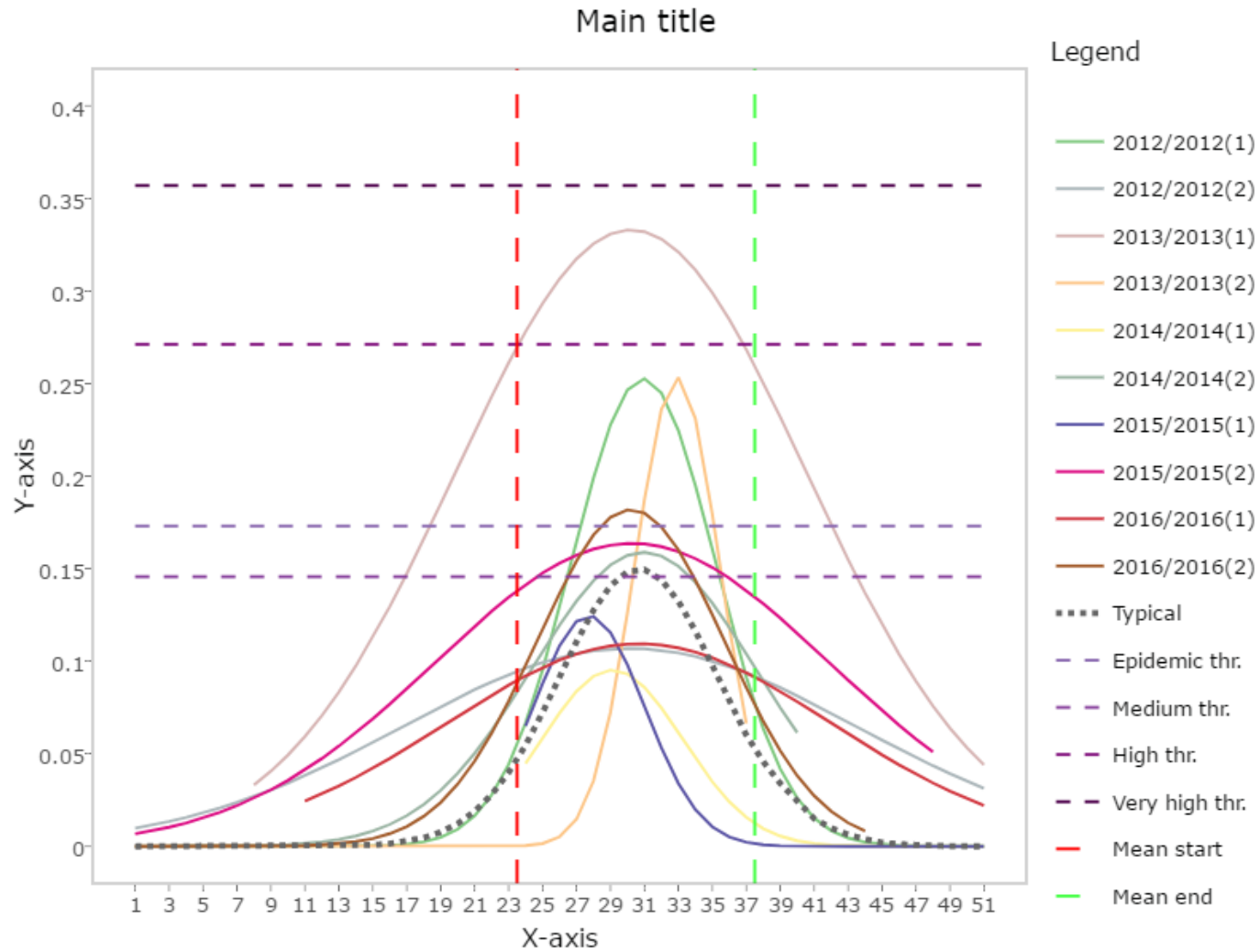
# Valores promedios de los umbrales



# Dos curvas - seasons

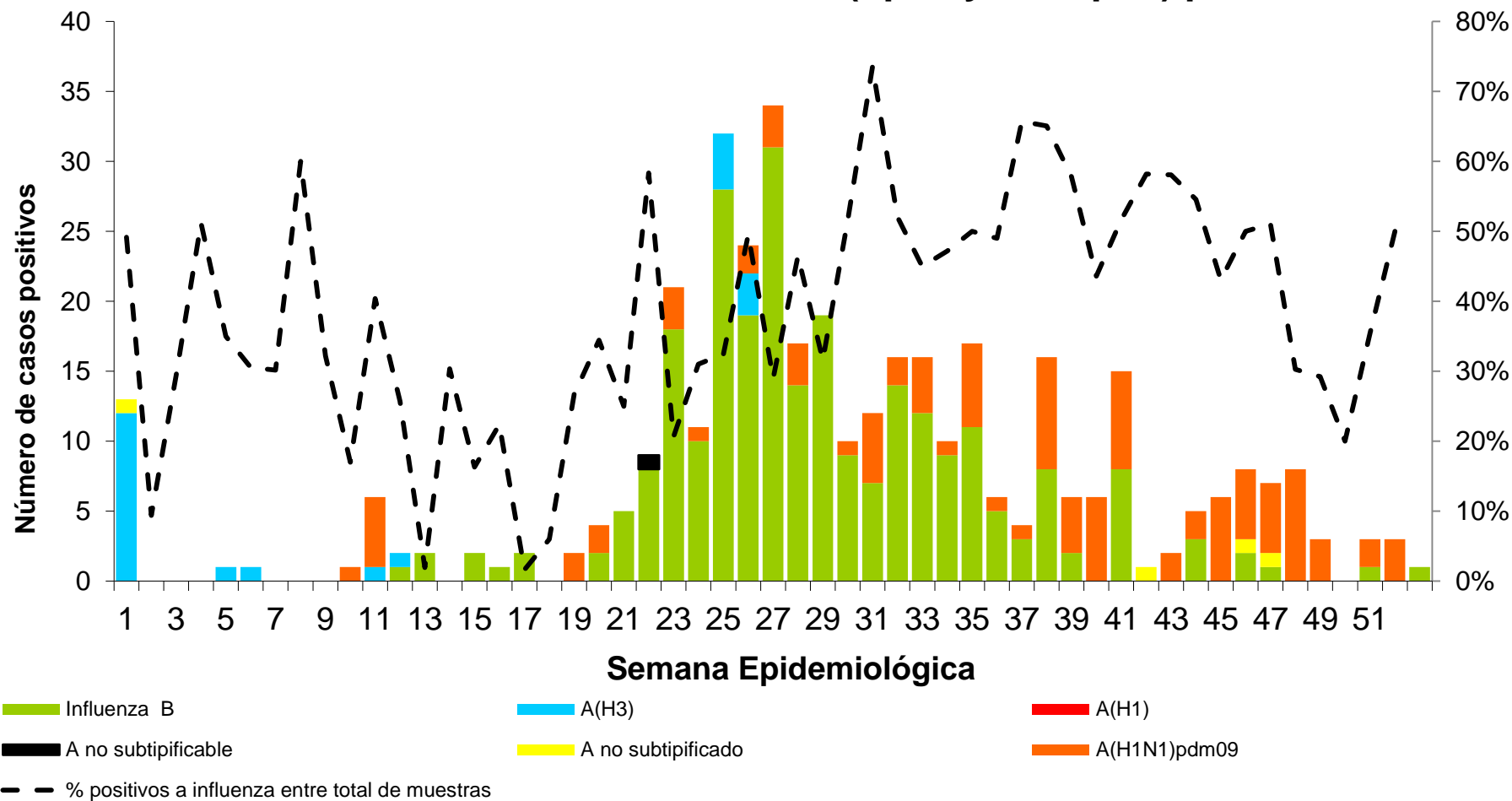


# Dos curvas-MEM



# AÑO 2013

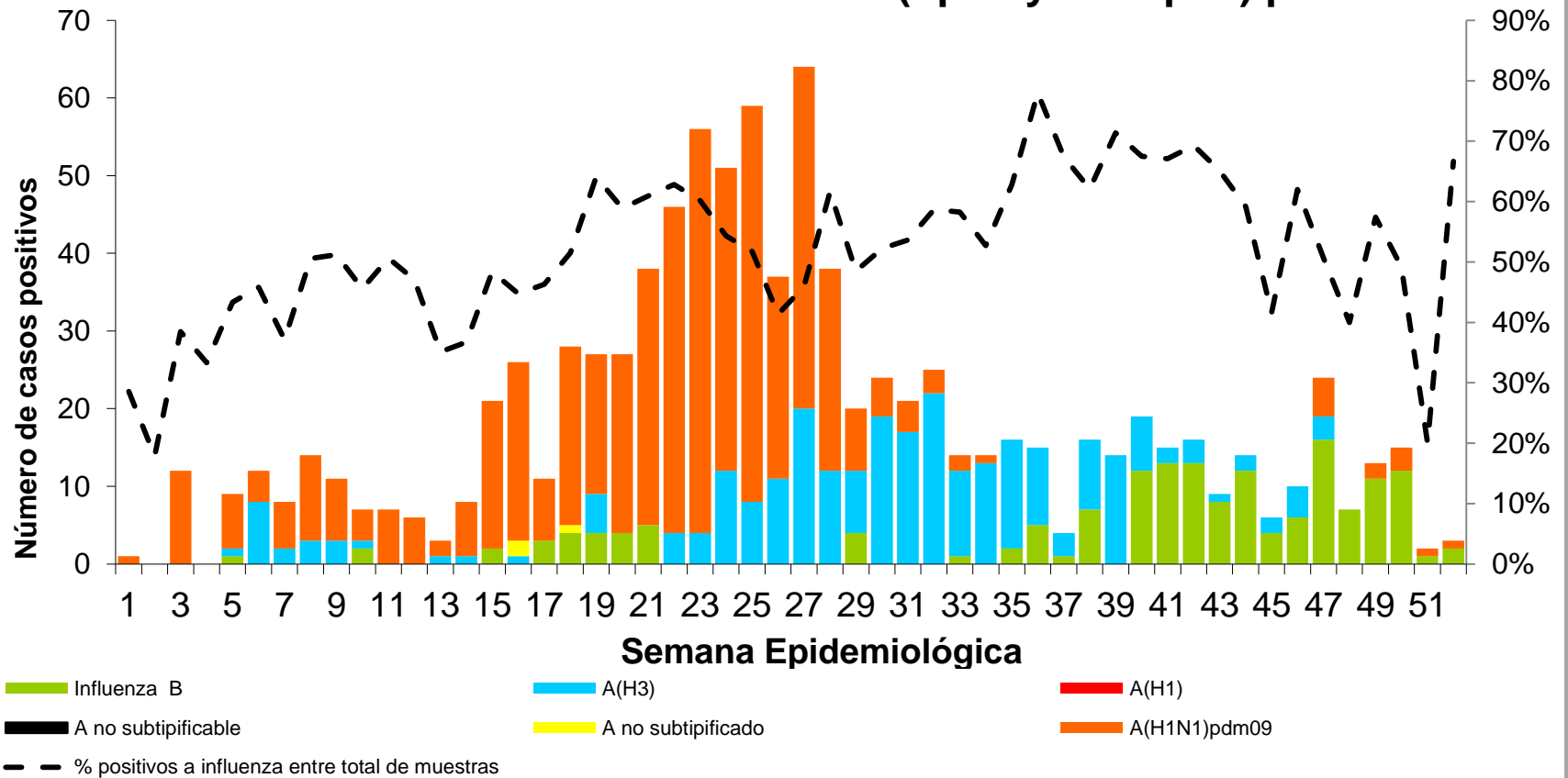
## Distribución de influenza (tipos y subtipos) por SE





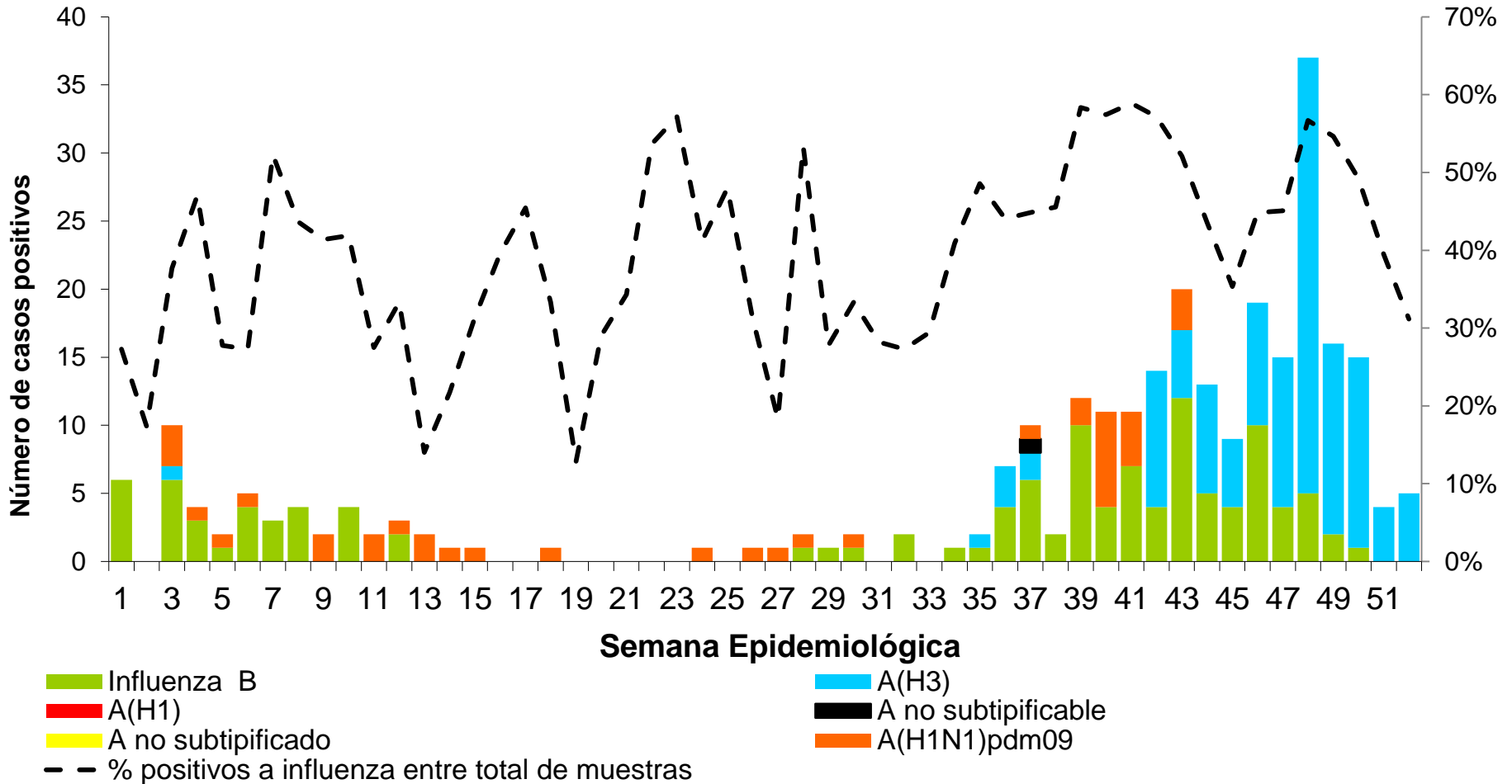
# AÑO 2014

## Distribución de influenza (tipos y subtipos) por SE



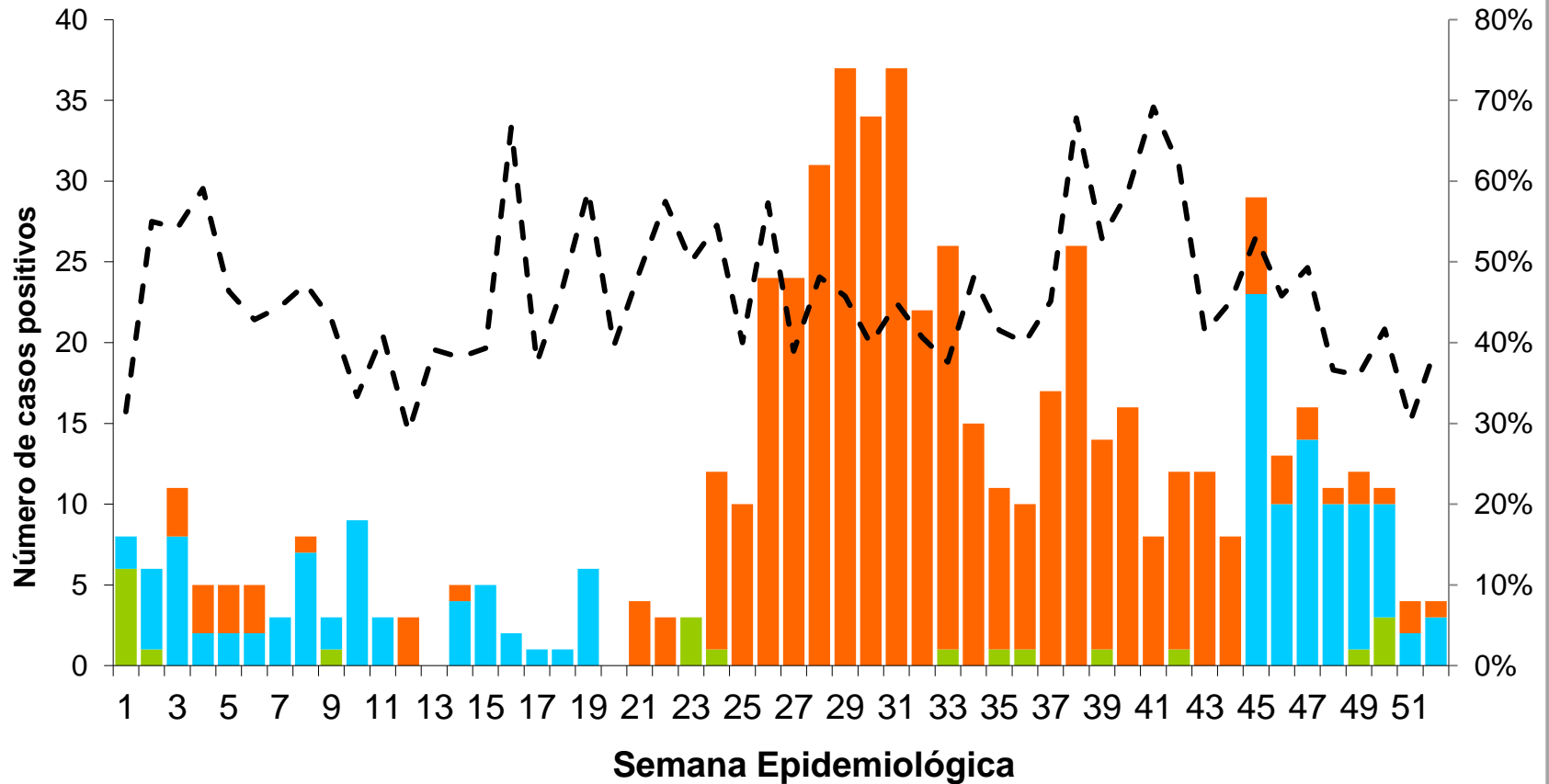
# Año 2014

## Distribución de influenza (tipos y subtipos) por SE



# AÑO 2015

## Distribución de influenza (tipos y subtipos) por SE



■ Influenza B   ■ A(H3)   ■ A(H1)   ■ A no subtipificable   ■ A no subtipificado   ■ A(H1N1)pdm09   - - - % positivos a influenza entre total de muestras

# AÑO 2016

