

Sarinet
MEM
Punta Cana 2017

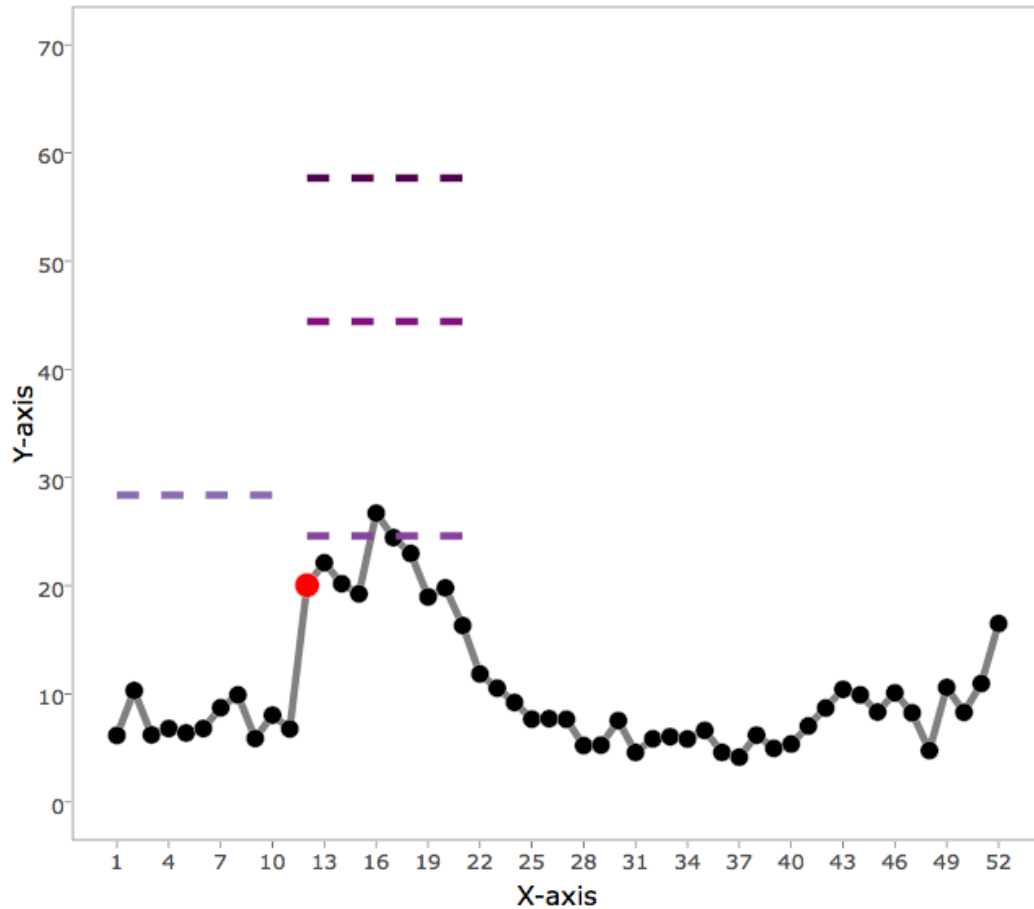
Colombia

Ecuador

Perú

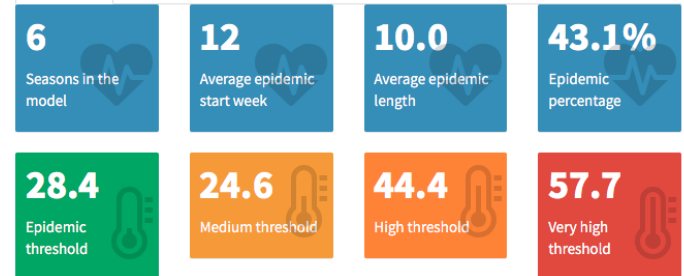
Colombia 2011-2017

Main title



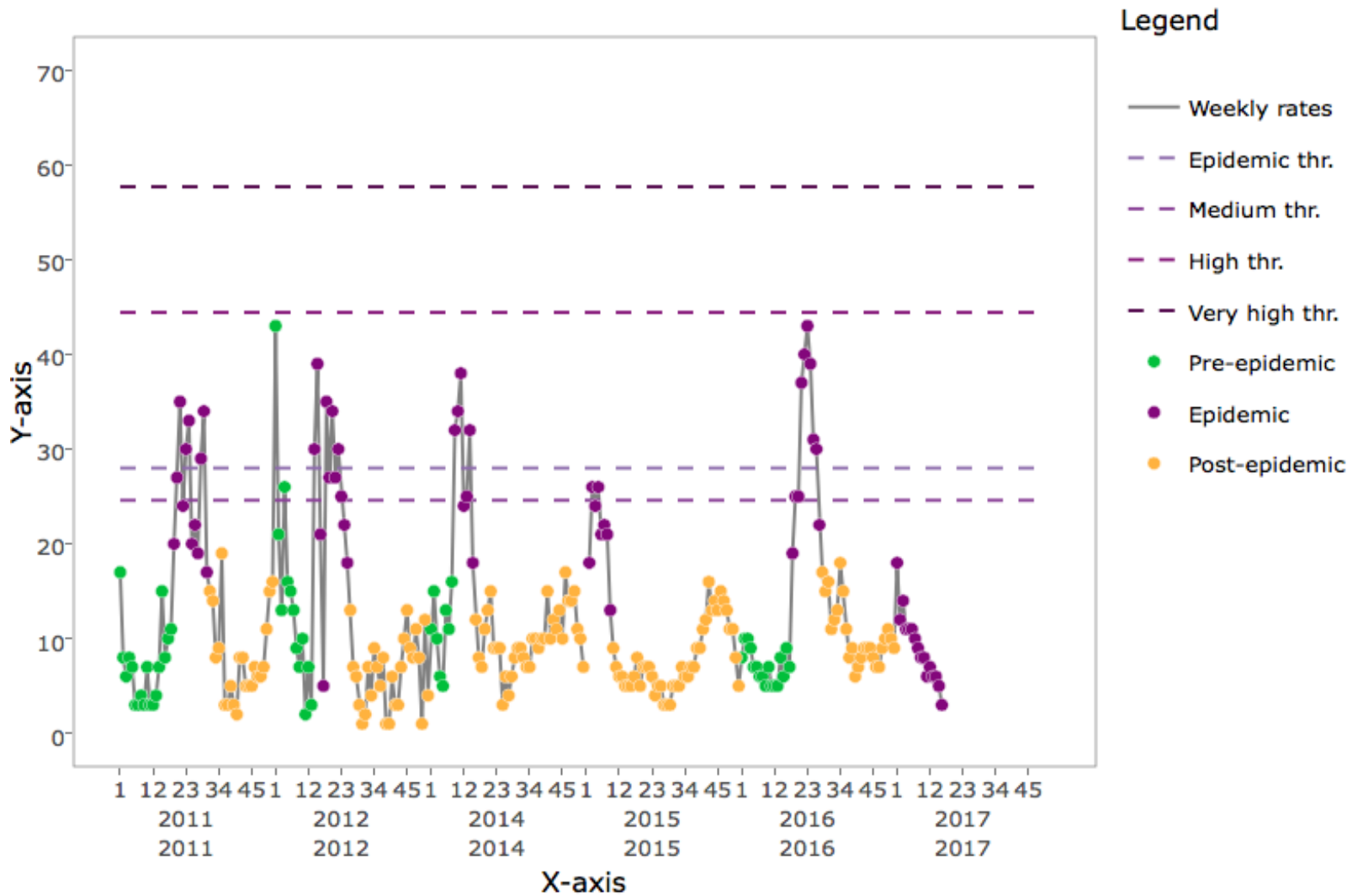
Legend

- Weekly rates
- ▬ Epidemic thr.
- ▬ Medium thr.
- ▬ High thr.
- ▬ Very high thr.
- Start



Se excluye el 2013

Colombia 2011-2017



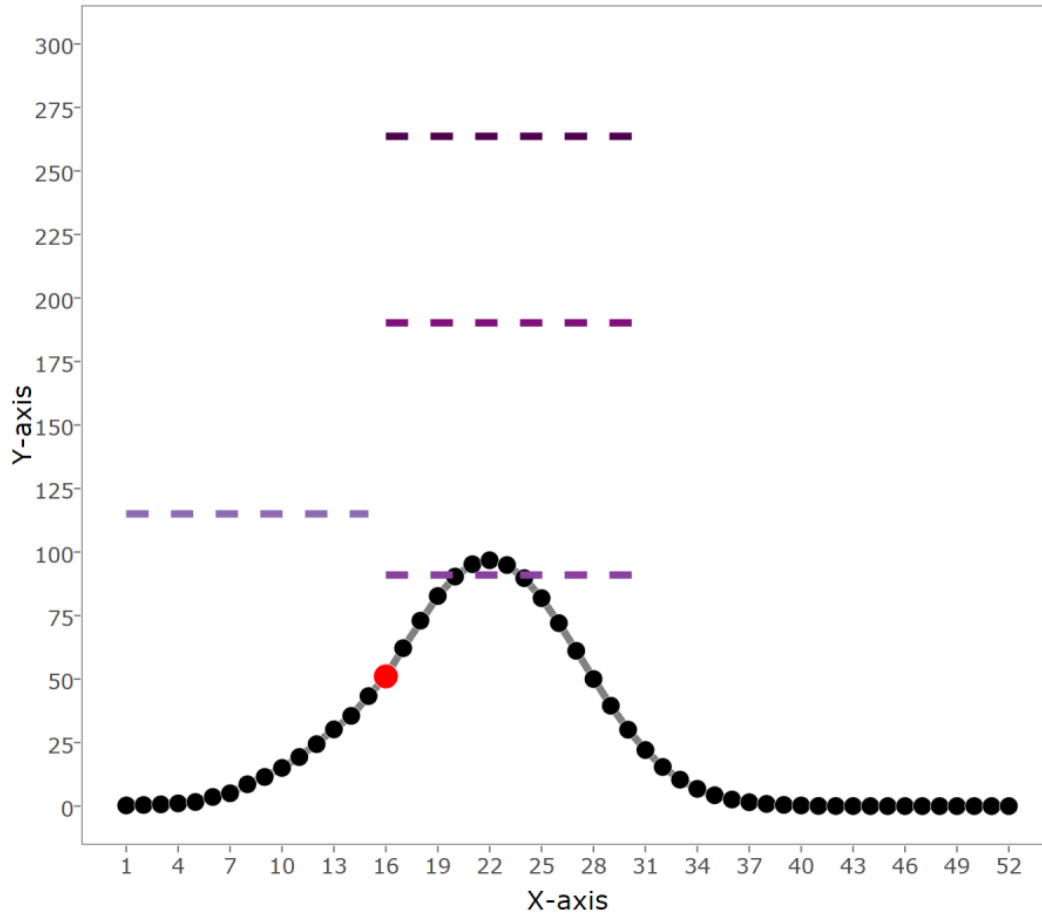
Se excluye el 2013

Ecuador 2011-2017

Main title

Legend

- Weekly rates
- ▬ Epidemic thr.
- ▬ Medium thr.
- ▬ High thr.
- ▬ Very high thr.
- Start



10
Seasons in the model

16
Average epidemic start week

16.0
Average epidemic length

80.8%
Epidemic percentage

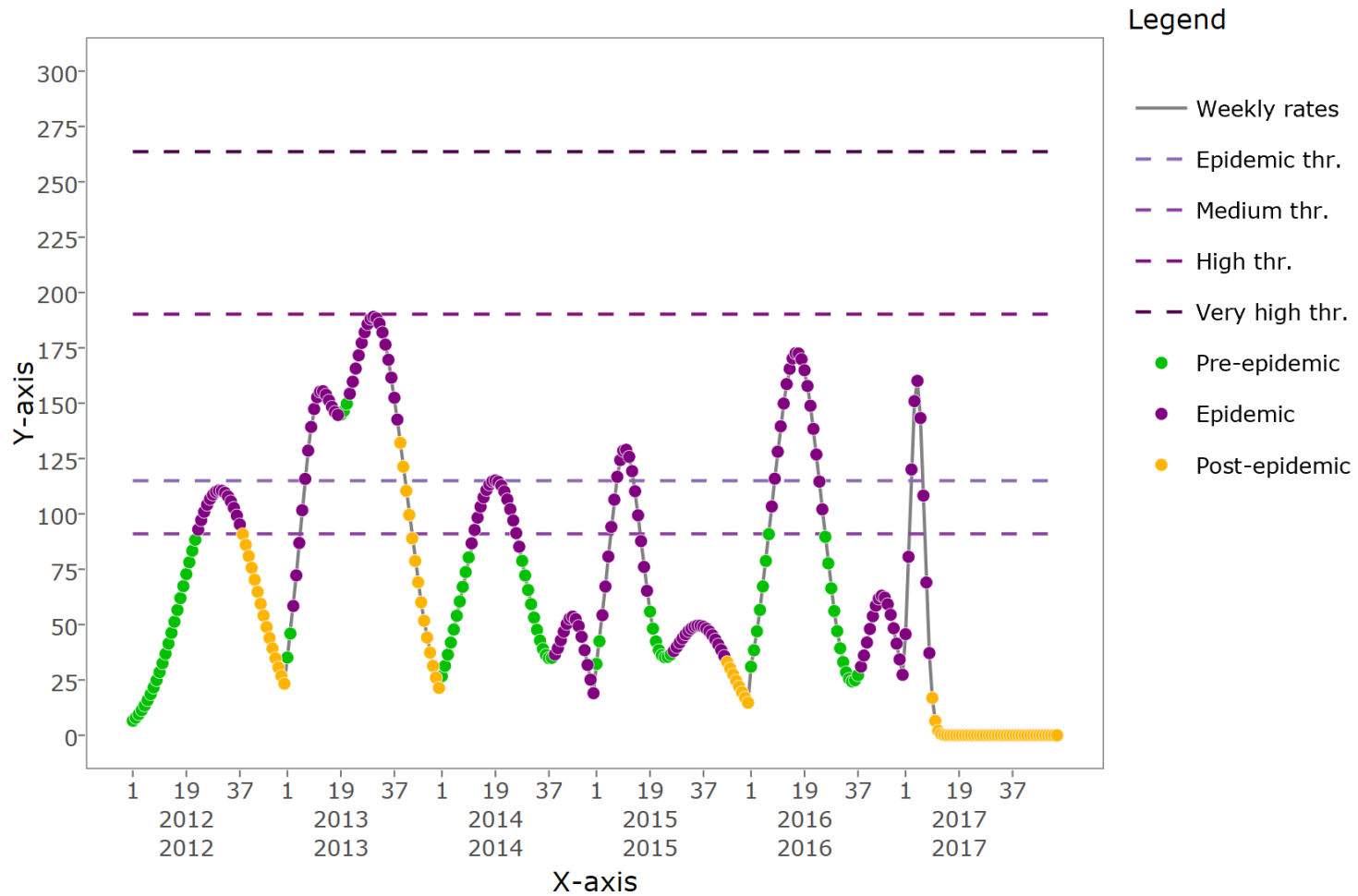
115.0
Epidemic threshold

90.9
Medium threshold

190.2
High threshold

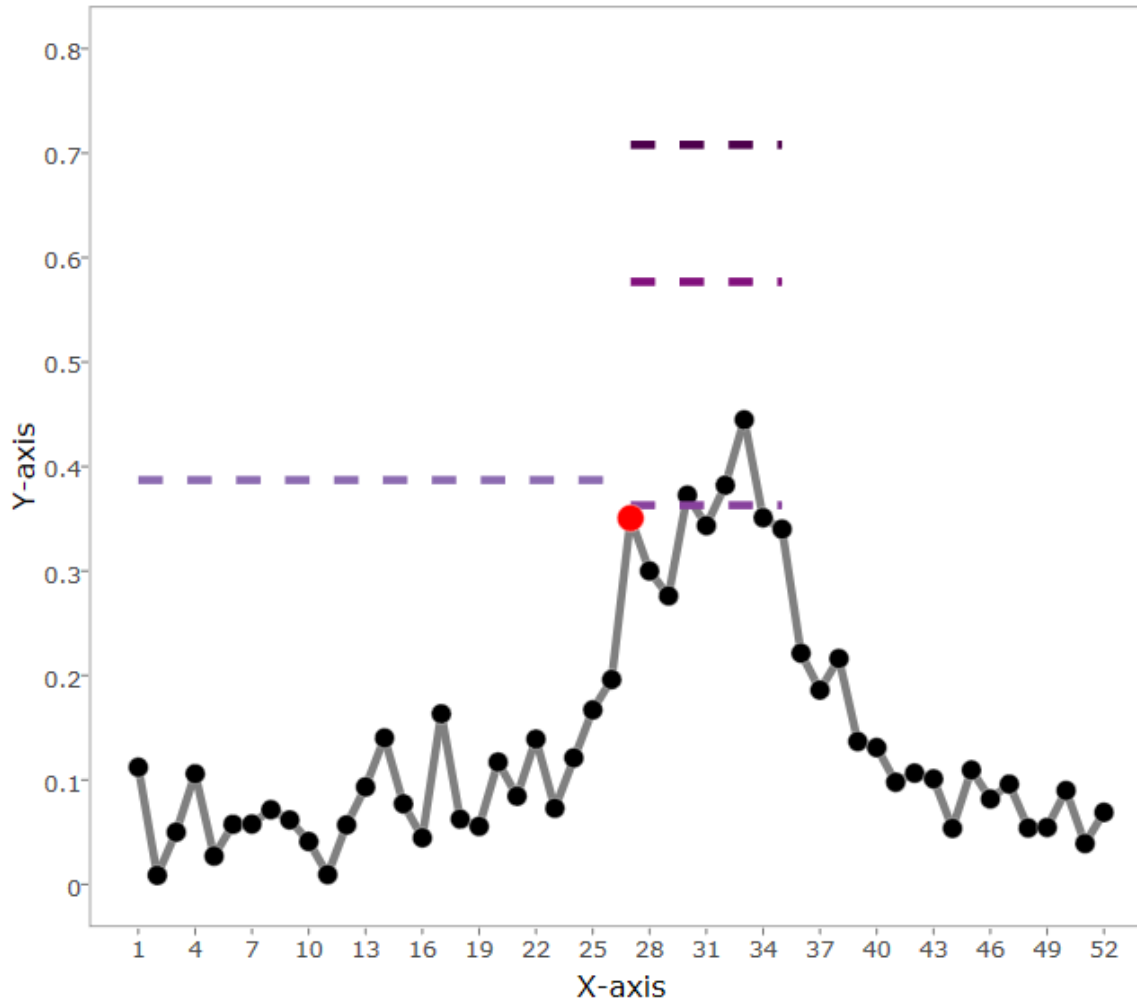
263.6
Very high threshold

Ecuador 2011-2017



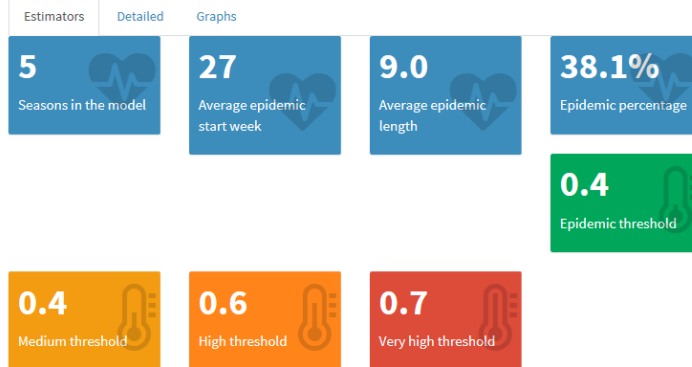
Perú 2011-2016

Main title



Legend

- Weekly rates
- ▬ Epidemic thr.
- ▬ Medium thr.
- ▬ High thr.
- ▬ Very high thr.
- Start



Se excluye el 2013