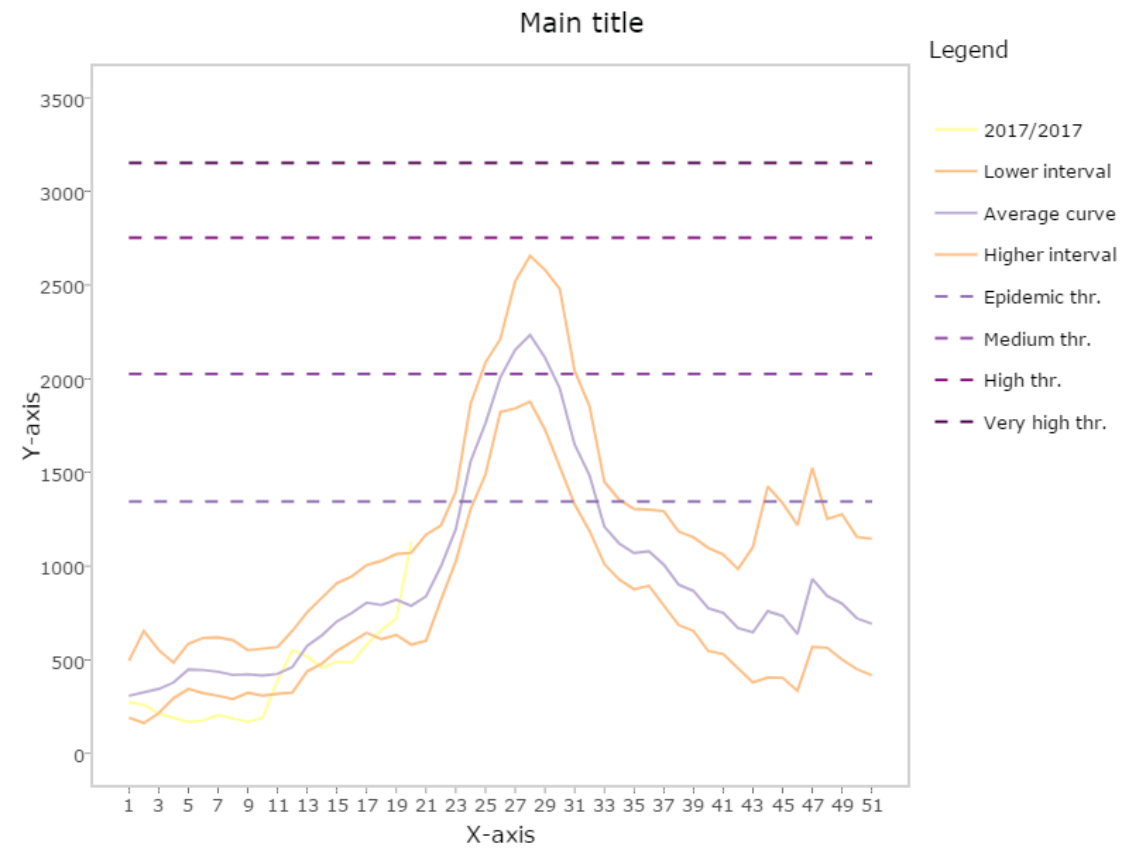
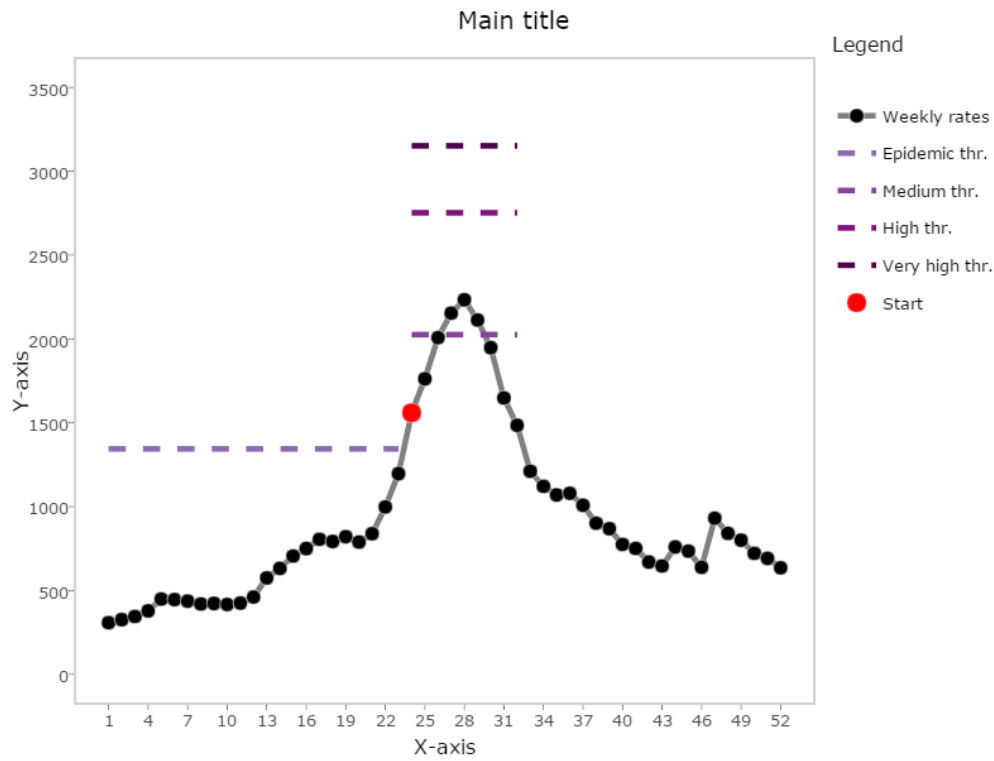


# Atenciones de Urgencia por Influenza



Estimators Detailed Graphs

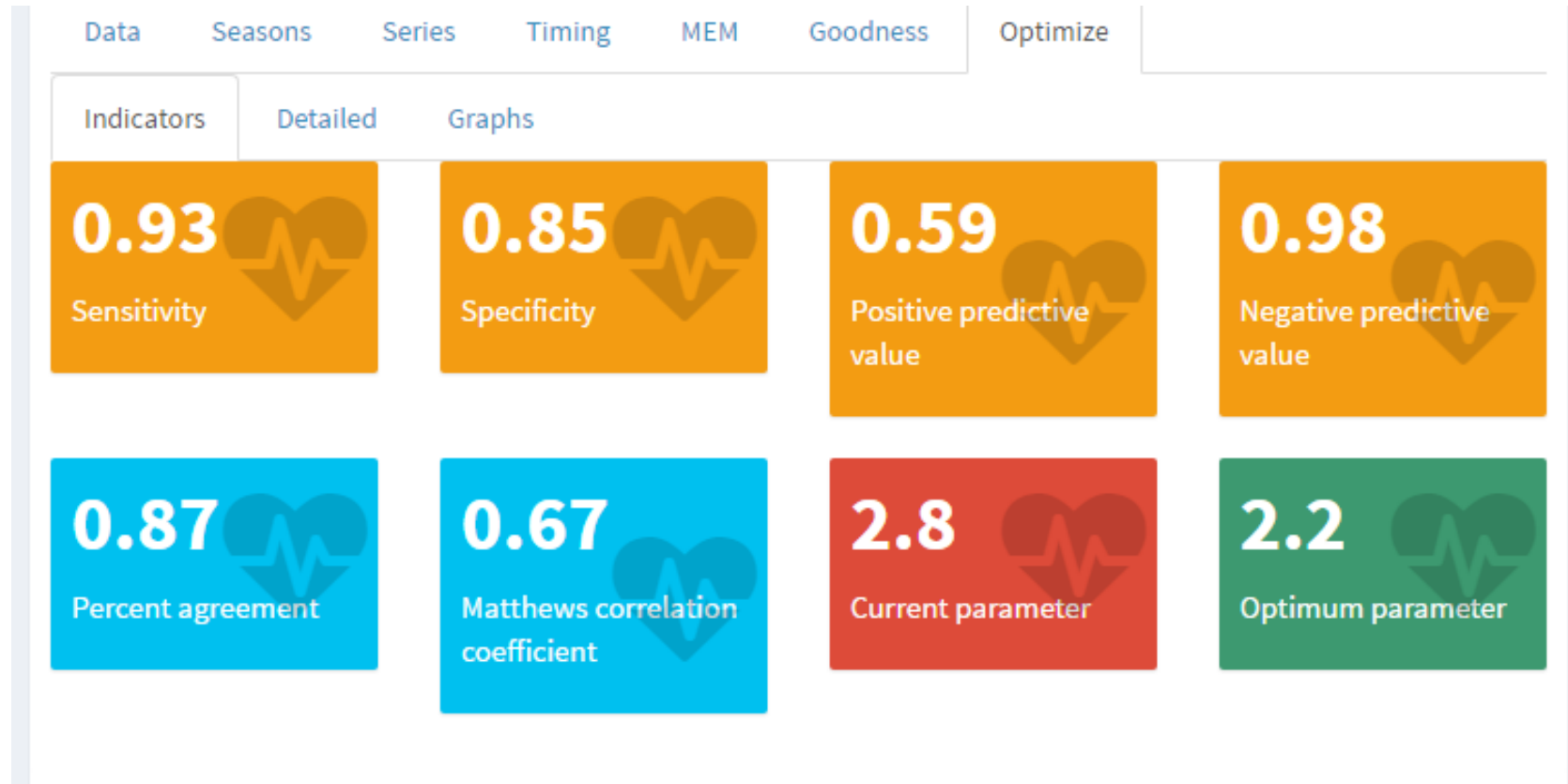
<b>6</b> Seasons in the model	<b>24</b> Average epidemic start week	<b>9.0</b> Average epidemic length	<b>41.5%</b> Epidemic percentage
<b>2025.8</b> Medium threshold	<b>2752.6</b> High threshold	<b>3152.0</b> Very high threshold	<b>1344.5</b> Epidemic threshold

Data Seasons Series Timing MEM Goodness Optimize

Indicators Detailed

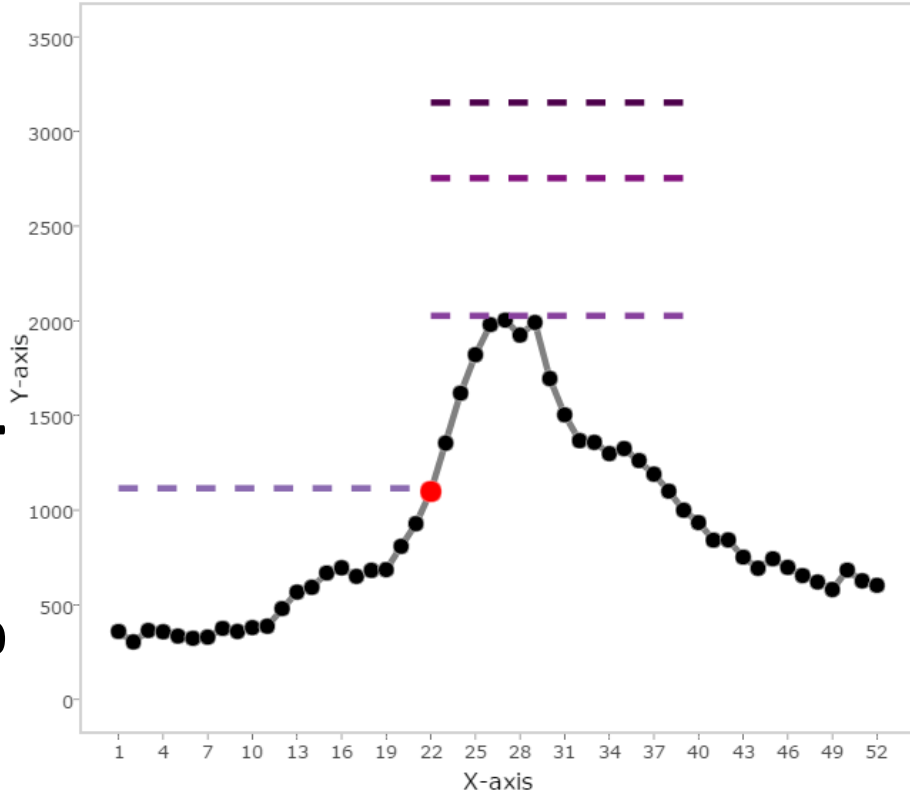
<b>0.72</b> Sensitivity	<b>0.92</b> Specificity	<b>0.68</b> Positive predictive value	<b>0.94</b> Negative predictive value
<b>0.89</b> Percent agreement	<b>0.63</b> Matthews correlation coefficient		

# Atenciones de Urgencia por Influenza



# Atenciones de Urgencia por Influenza

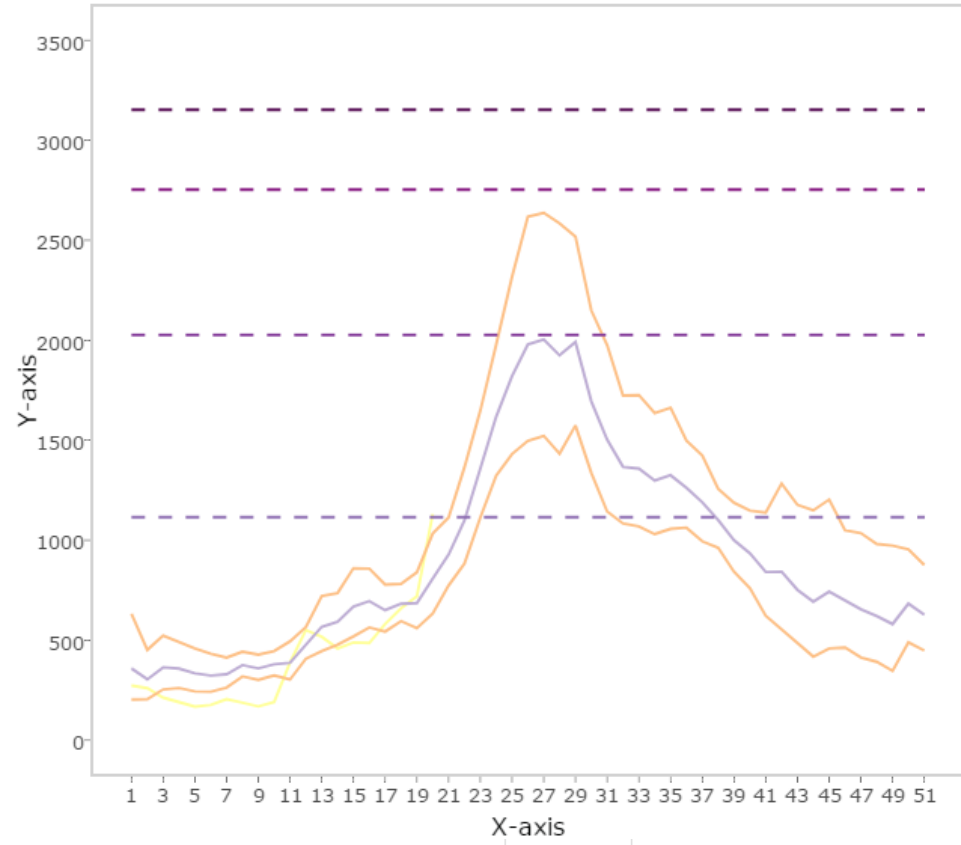
Main title



Legend

- Weekly rates
- ▬ Epidemic thr.
- ▬ Medium thr.
- ▬ High thr.
- ▬ Very high thr.
- Start

Main title



Legend

- ▬ 2017/2017
- ▬ Lower interval
- ▬ Average curve
- ▬ Higher interval
- ▬ Epidemic thr.
- ▬ Medium thr.
- ▬ High thr.
- ▬ Very high thr.

Estimators

Detailed

Graphs

**6**  
Seasons in the model

**22**  
Average epidemic start week

**17.5**  
Average epidemic length

**57.6%**  
Epidemic percentage

**1115.4**  
Epidemic threshold

**2026.5**  
Medium threshold

**2753.2**  
High threshold

**3152.5**  
Very high threshold

Data

Seasons

Series

Timing

MEM

Goodness

Optimize

Indicators

Detailed

**0.93**  
Sensitivity

**0.85**  
Specificity

**0.59**  
Positive predictive value

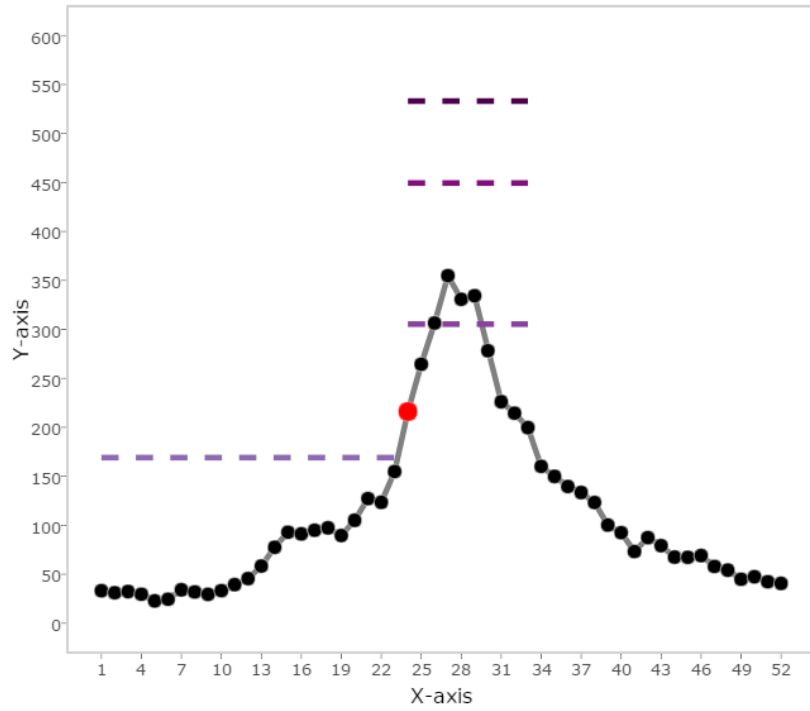
**0.98**  
Negative predictive value

**0.87**  
Percent agreement

**0.67**  
Matthews correlation coefficient

# ETI Centinela

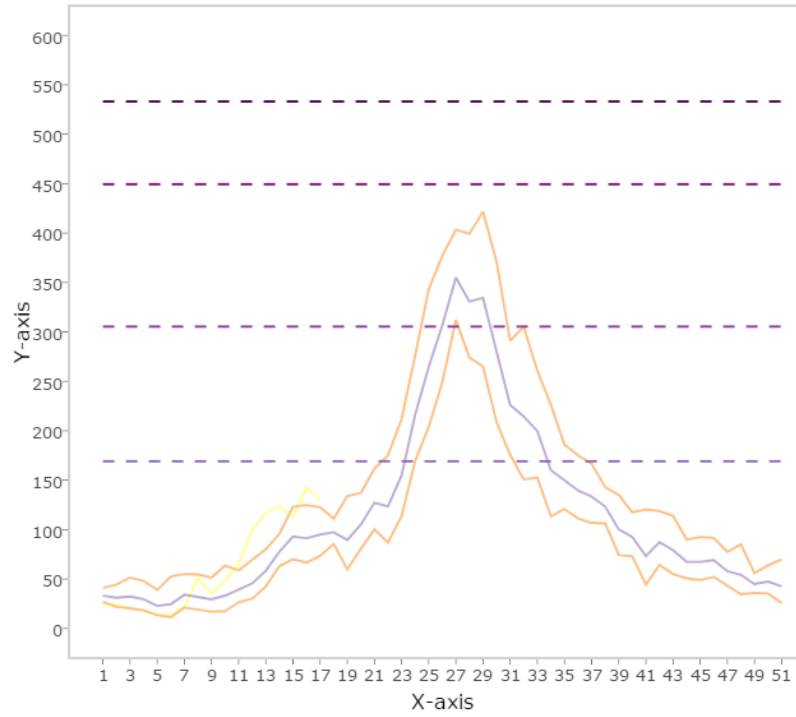
Main title



Legend

- Weekly rates
- ▬ Epidemic thr.
- ▬ Medium thr.
- ▬ High thr.
- ▬ Very high thr.
- Start

Main title



Legend

- ▬ 2017/2017
- ▬ Lower interval
- ▬ Average curve
- ▬ Higher interval
- ▬ Epidemic thr.
- ▬ Medium thr.
- ▬ High thr.
- ▬ Very high thr.

Estimators Detailed Graphs

<b>6</b> Seasons in the model	<b>24</b> Average epidemic start week	<b>10.5</b> Average epidemic length	<b>47.7%</b> Epidemic percentage
<b>305.4</b> Medium threshold	<b>449.4</b> High threshold	<b>533.1</b> Very high threshold	<b>169.1</b> Epidemic threshold

Data Seasons Series Timing MEM Goodness Optimize

Indicators Detailed

<b>0.83</b> Sensitivity	<b>0.95</b> Specificity	<b>0.83</b> Positive predictive value	<b>0.95</b> Negative predictive value
<b>0.93</b> Percent agreement	<b>0.78</b> Matthews correlation coefficient		

Data Seasons Series Timing MEM Goodness Optimize

Indicators Detailed Graphs

<b>0.83</b> Sensitivity	<b>0.95</b> Specificity	<b>0.83</b> Positive predictive value	<b>0.95</b> Negative predictive value
<b>0.93</b> Percent agreement	<b>0.78</b> Matthews correlation coefficient	<b>2.8</b> Current parameter	<b>2.8</b> Optimum parameter