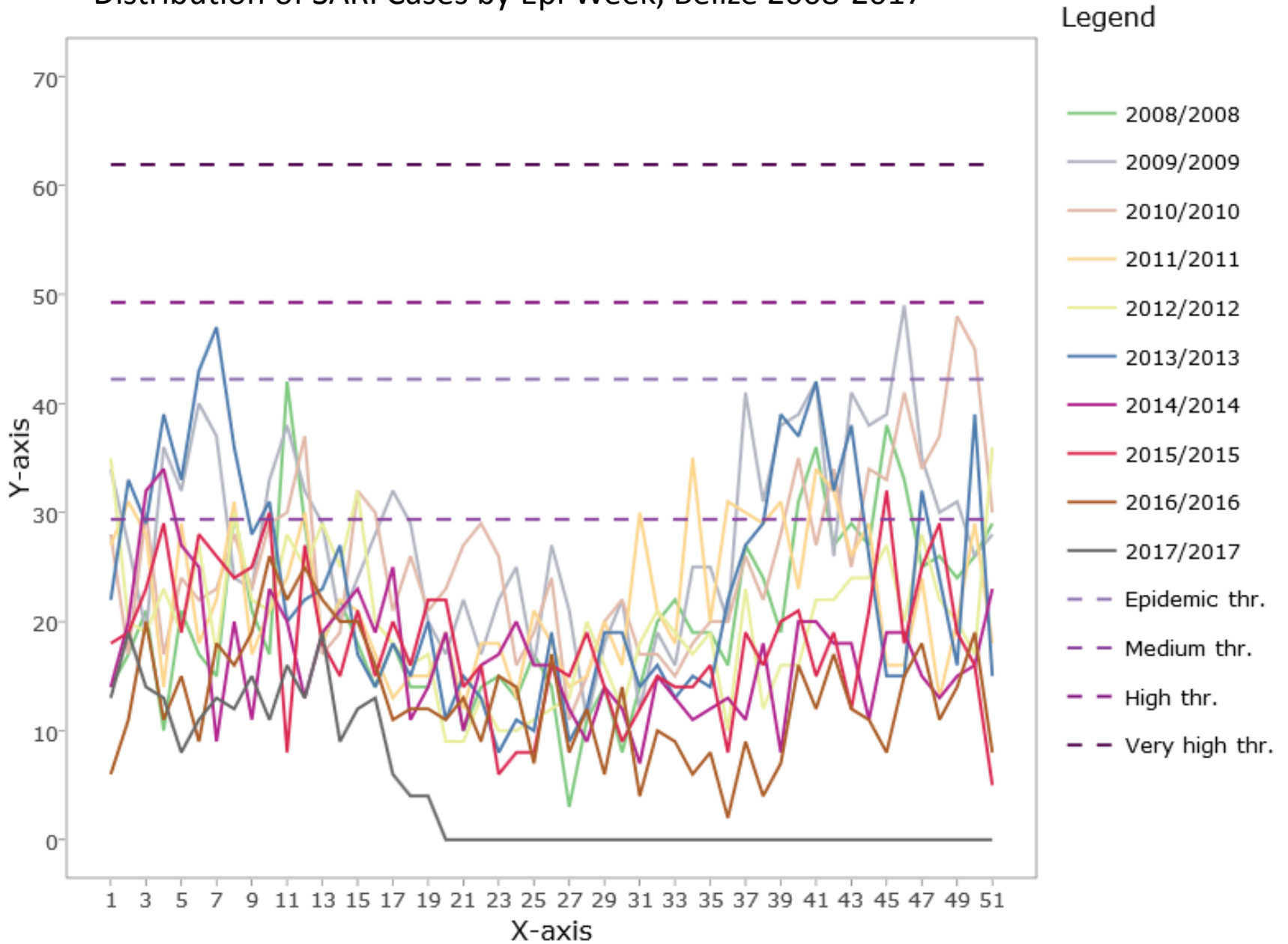
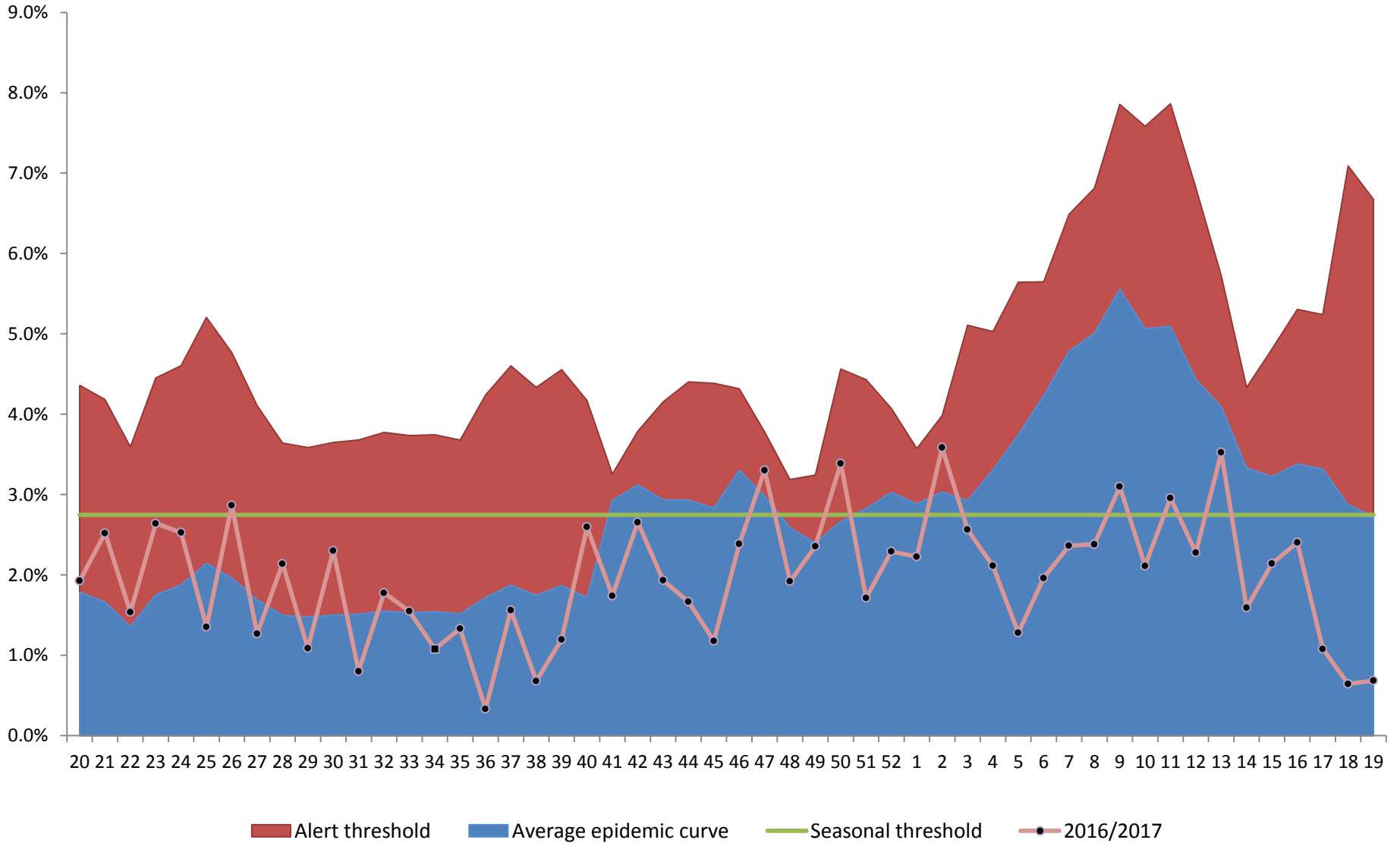


Belize

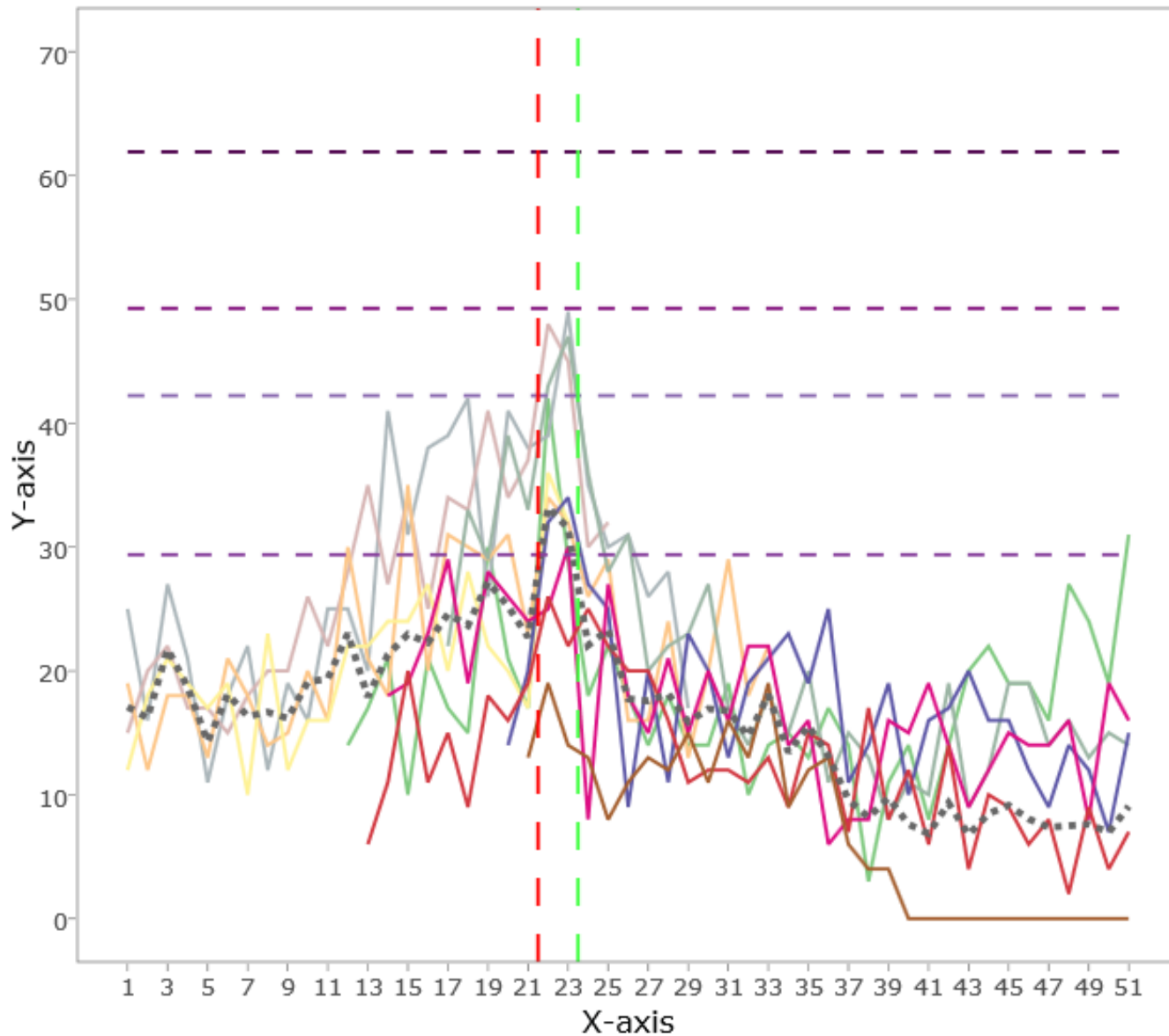
# Distribution of SARI Cases by Epi Week, Belize 2008-2017



# Epidemic Baseline SARI - 2017



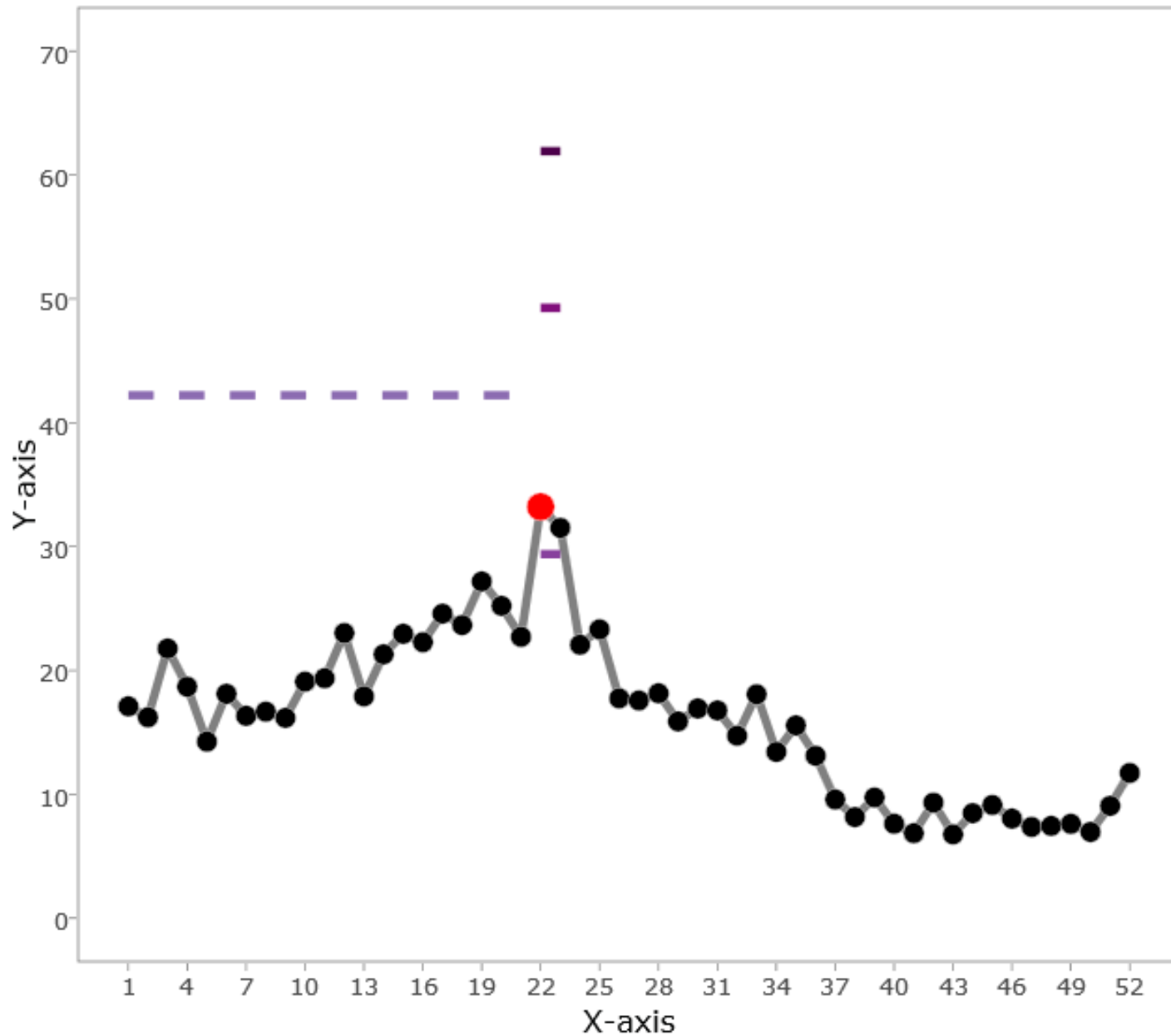
# Applying Moving Epidemic Method with threshold



## Legend

- 2008/2008
- 2009/2009
- 2010/2010
- 2011/2011
- 2012/2012
- 2013/2013
- 2014/2014
- 2015/2015
- 2016/2016
- 2017/2017
- Typical
- Epidemic thr.
- Medium thr.
- High thr.
- Very high thr.
- Mean start
- Mean end

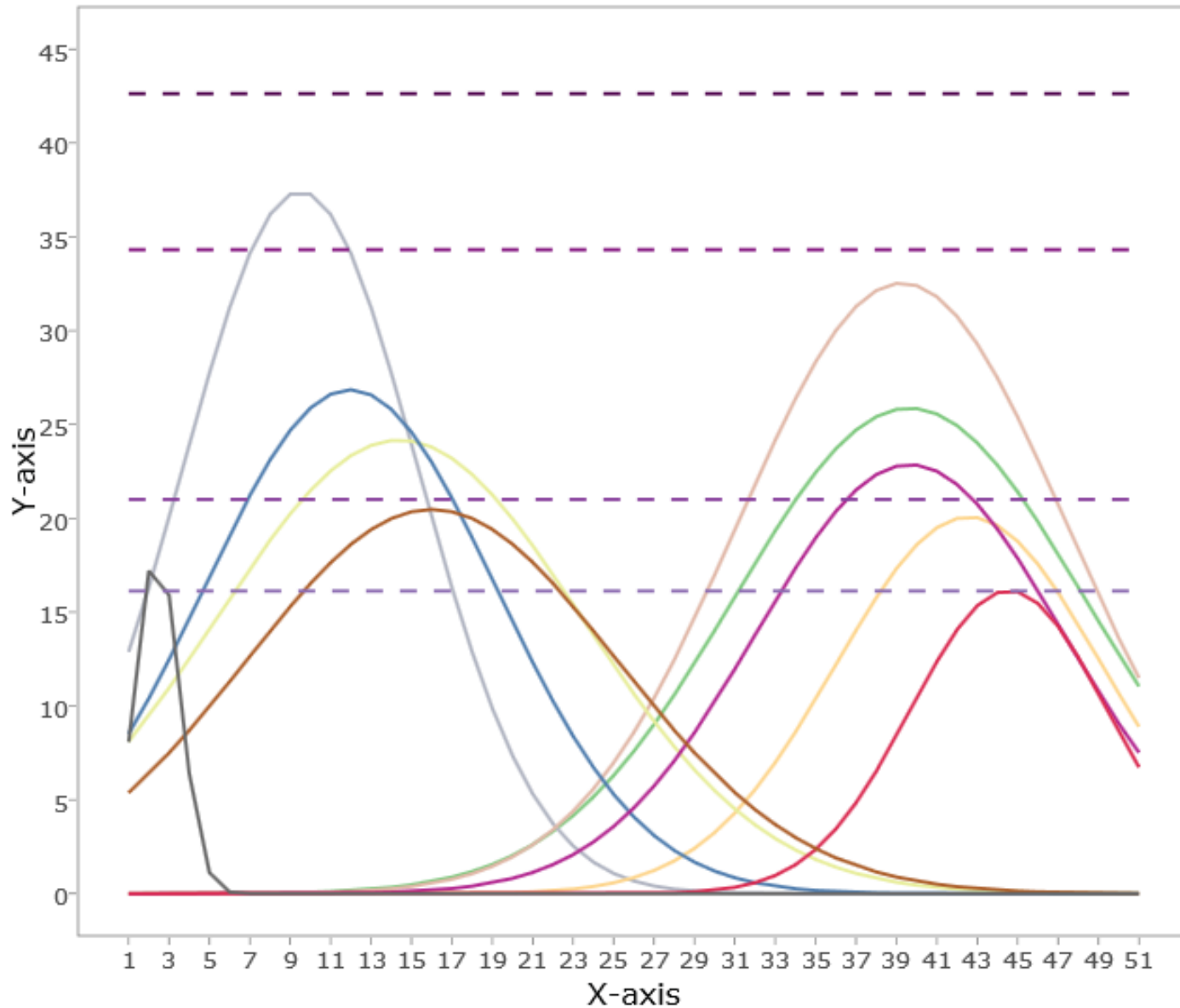
Average Curve with threshold



Legend

- Weekly rates
- Epidemic thr.
- Medium thr.
- High thr.
- Very high thr.
- Start

# Season using 2 Waves (Expected)

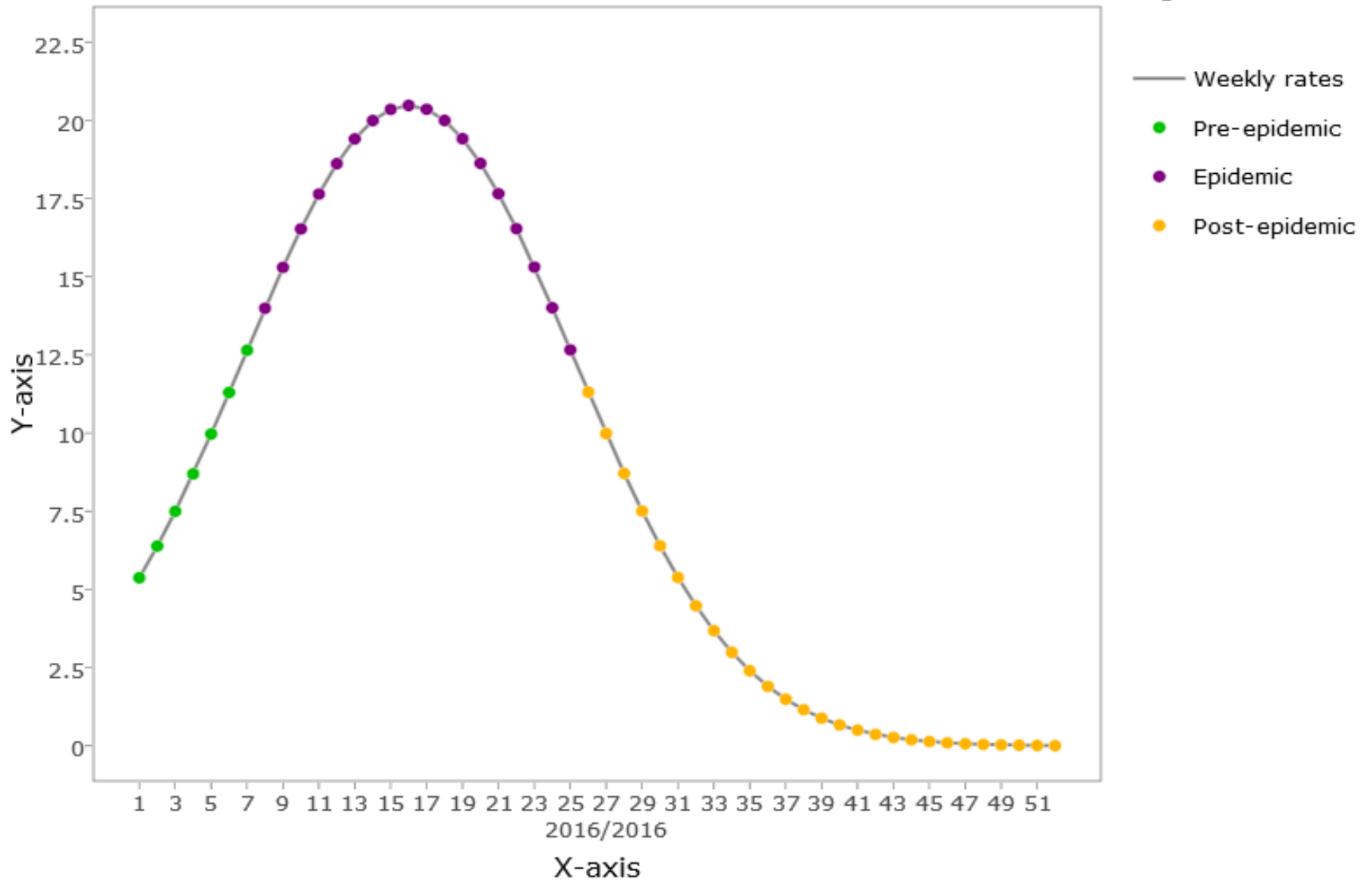


## Legend

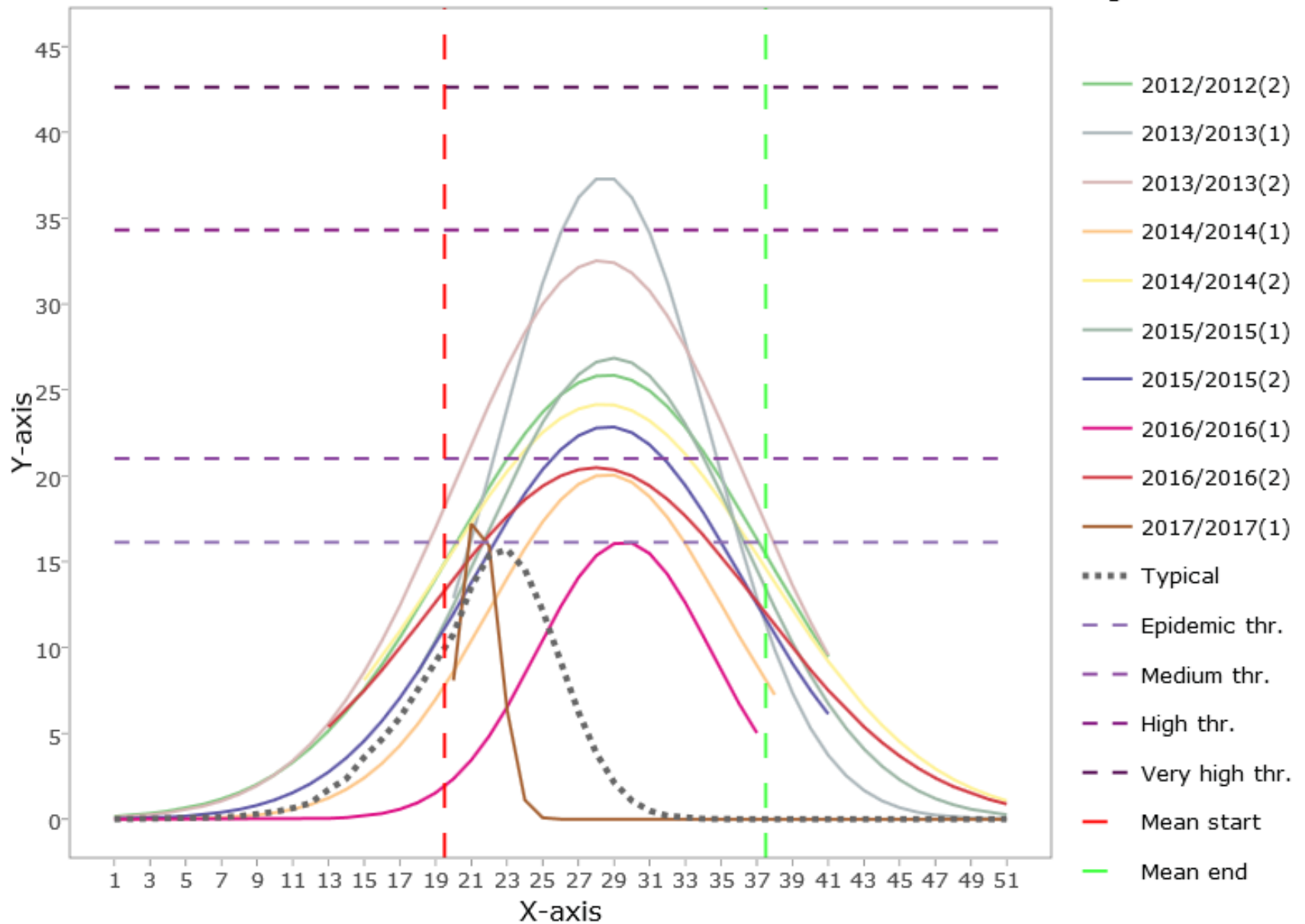
- 2012/2012(2)
- 2013/2013(1)
- 2013/2013(2)
- 2014/2014(1)
- 2014/2014(2)
- 2015/2015(1)
- 2015/2015(2)
- 2016/2016(1)
- 2016/2016(2)
- 2017/2017(1)
- Epidemic thr.
- Medium thr.
- High thr.
- Very high thr.

# Main title

## Legend



# Moving Epidemic using 2 Wave (Expected), Belize 2016





Average Curve with threshold using 2 Wave (Expected)

